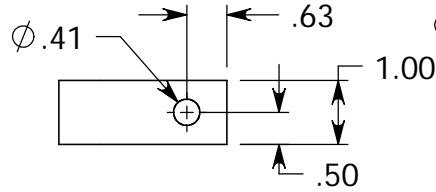
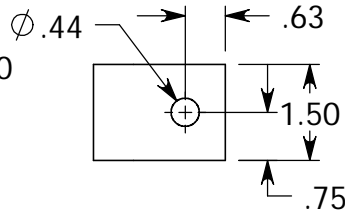


STATION	
O.C.	X
CNCM	
CNCL	
ENG	X
SALES	X
1	
2	
3	
4	
5	
6a	
6b	
6c	X
7	

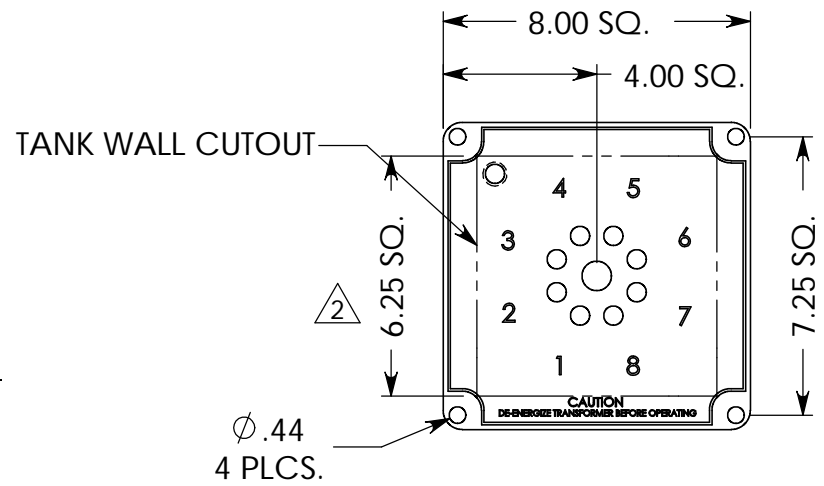
NOTE:
 1. CUSTOMER TO REMOVE .25 THK. SPACERS
 WHEN MOUNTING TO PANEL.
 2. ADDITIONAL SUPPORT AT (4) PLACES.



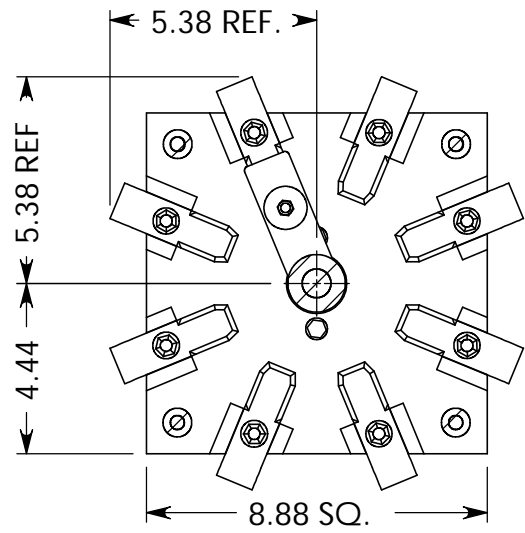
CUSTOMER CONNECTION:
 CONTACT CLIP (.375 THK.)



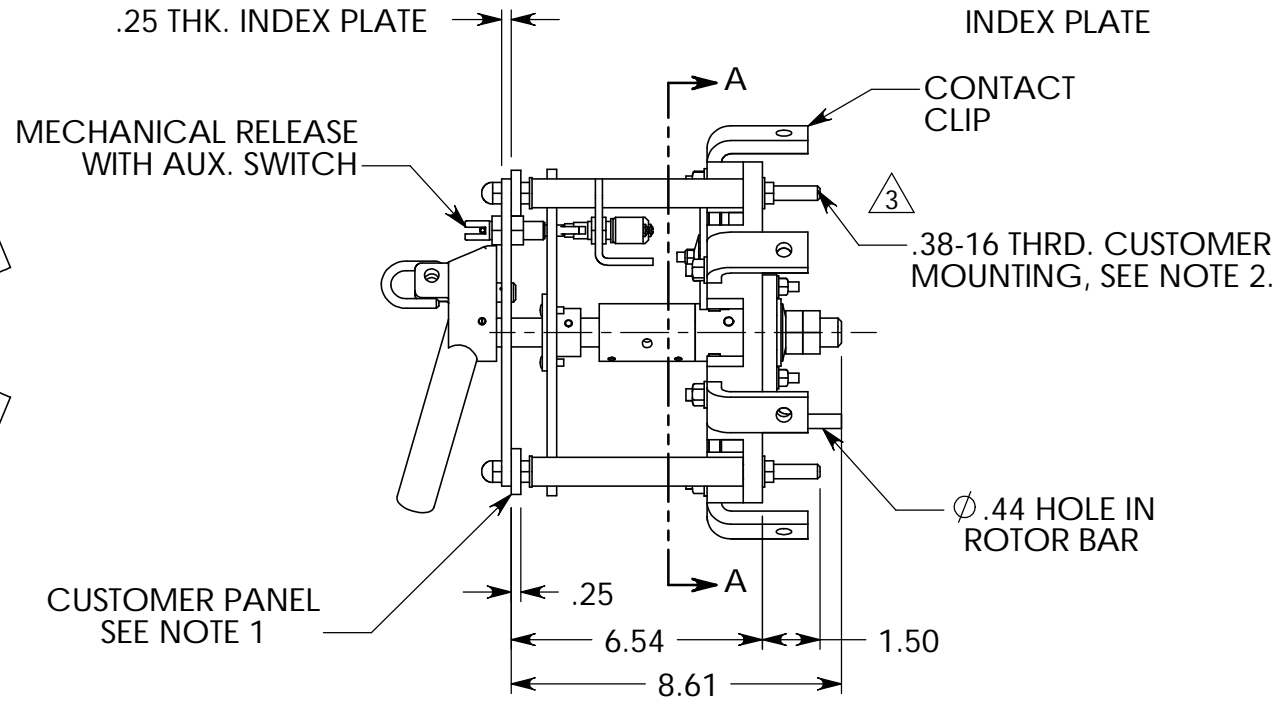
CUSTOMER CONNECTION:
 ROTOR BAR (.375 THK.)



ϕ .44
 4 PLCS.



SECTION A-A



CUSTOMER PANEL
 SEE NOTE 1

INDEX PLATE

CONTACT CLIP

.38-16 THRD. CUSTOMER MOUNTING, SEE NOTE 2.

ϕ .44 HOLE IN ROTOR BAR

© COPYRIGHT 2000 THIS PRINT IS THE PROPERTY OF QUALITY SWITCH, INC. AND IS LOANED SUBJECT TO THE RETURN UPON DEMAND. ITS CONTENTS ARE CONFIDENTIAL AND MUST NOT BE COPIED OR SUBMITTED, IN ANY FORM, TO OUTSIDE PARTIES FOR USE OR EXAMINATION. ALL RIGHTS TO DESIGN OR INVENTION ARE RESERVED BY QUALITY SWITCH, INC.

QUALITY SWITCH, INC.
 NEWTON FALLS, OHIO

UNLESS OTHERWISE SPECIFIED
 DIMENSIONS ARE IN INCHES,
 TOLERANCE \pm .005, ANGLES \pm 30'
 WEIGHT: 15.1 LBS. DFTM: P.L.E.

CAD GENERATED
 DRAWING, DO
 NOT MANUALLY
 CHANGE

MAT:	
CHKD: D.L.S.	SCALE 1:5
CHKD:	SHEET 1 OF 3

**1 DECK 8 POS 400 AMP
 1.2 KV TAPCHANGER
 FOR USE IN AIR**

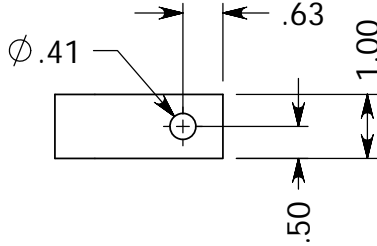
PLOT DATE: 1/19/04	
FILE: F:\QS\2\2D0400108SB1-WPM-00	
REF:	DATE: 12-17-02
DWG. NO. 2D0400108SB1-WPM-00	

03 30-408-01 WAS 30-401-12 R.M.N. 8/4/03
 02 6.25 SQ. DIM. WAS 5.50 SQ. DIM. R.M.N. 7/21/03

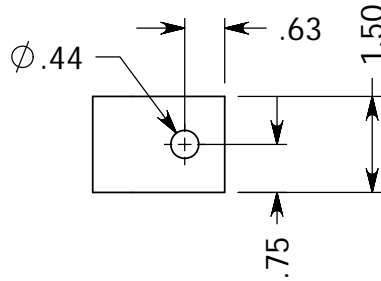
STATION	
O.C.	X
CNCM	
CNCL	
ENG	X
SALES	X
CAT	X
1	
2	
3	
4	
5	
6a	
6b	
6c	X
6g	
7	

NOTE:

1. CUSTOMER TO REMOVE .13 THK. SPACERS WHEN MOUNTING TO PANEL.
2. ADDITIONAL SUPPORT PROVIDED AT FOUR PLACES.
3. SWITCH SHOWN IN POSITION 1
4. CUSTOMER TO SPECIFY NUMBERS OR LETTERS ON INDEX PLATE.



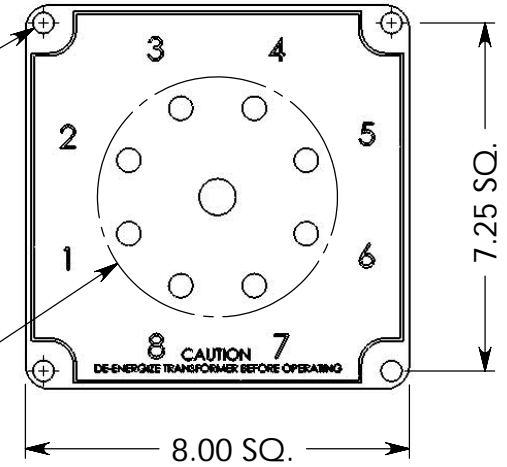
CUSTOMER CONNECTION:
CLIP .38 THK



CUSTOMER CONNECTION:
ROTOR BAR .38 THK

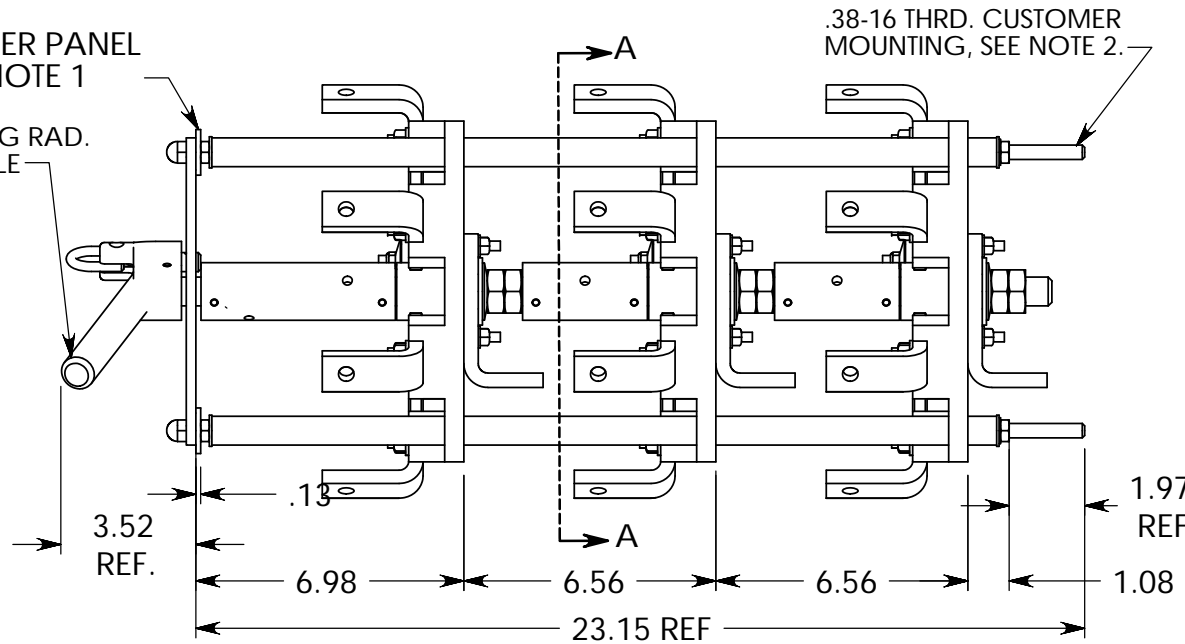
Ø.44 MOUNTING
THRU INDEX PLATE
& PANEL WALL
4 PLCS

Ø5.00
TANK WALL
CUT OUT

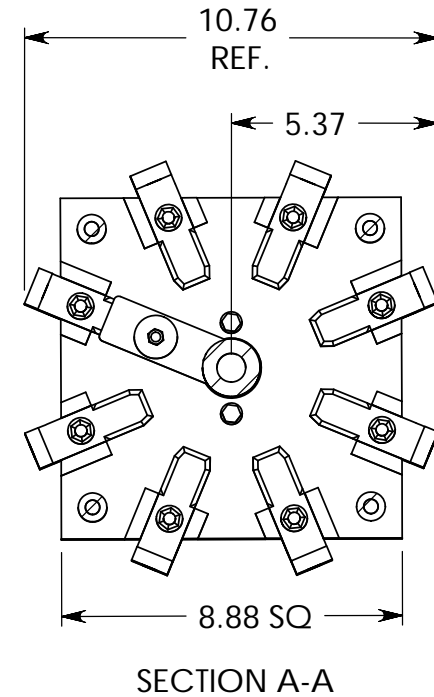


CUSTOMER PANEL
SEE NOTE 1

5.75 SWING RAD.
OF HANDLE



.38-16 THRD. CUSTOMER
MOUNTING, SEE NOTE 2.



SECTION A-A

© COPYRIGHT 2000 THIS PRINT IS THE PROPERTY OF QUALITY SWITCH, INC. AND IS LOANED SUBJECT TO THE RETURN UPON DEMAND. ITS CONTENTS ARE CONFIDENTIAL AND MUST NOT BE COPIED OR SUBMITTED, IN ANY FORM, TO OUTSIDE PARTIES FOR USE OR EXAMINATION. ALL RIGHTS TO DESIGN OR INVENTION ARE RESERVED BY QUALITY SWITCH, INC.

QUALITY SWITCH, INC.
NEWTON FALLS, OHIO

UNLESS OTHERWISE SPECIFIED
DIMENSIONS ARE IN INCHES,
TOLERANCE ±.005, ANGLES ±30'
WEIGHT: 19.83 LBS. DFTM: J.A.S.

CAD GENERATED
DRAWING, DO
NOT MANUALLY
CHANGE

MAT:

CHKD: D.L.S.

SCALE

1:5

CHKD:

SHEET

OF

1

3

**TITLE: 3 DECK 8 POS. 400 AMP.
5 KV TAPCHANGER
FOR USE IN AIR**

PLOT DATE: 10/5/2007

FILE:H:\2\400A\2D0400508SB3-000-00

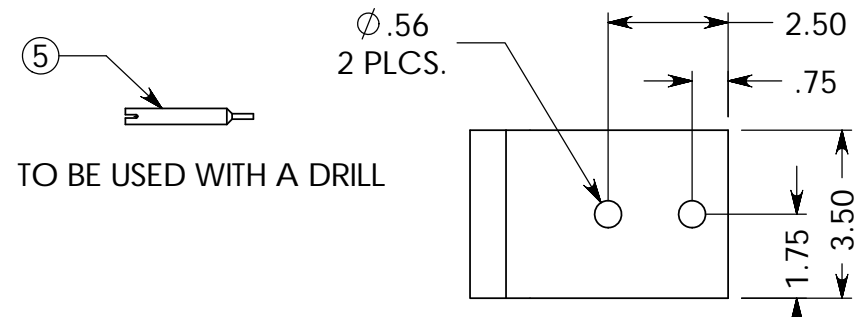
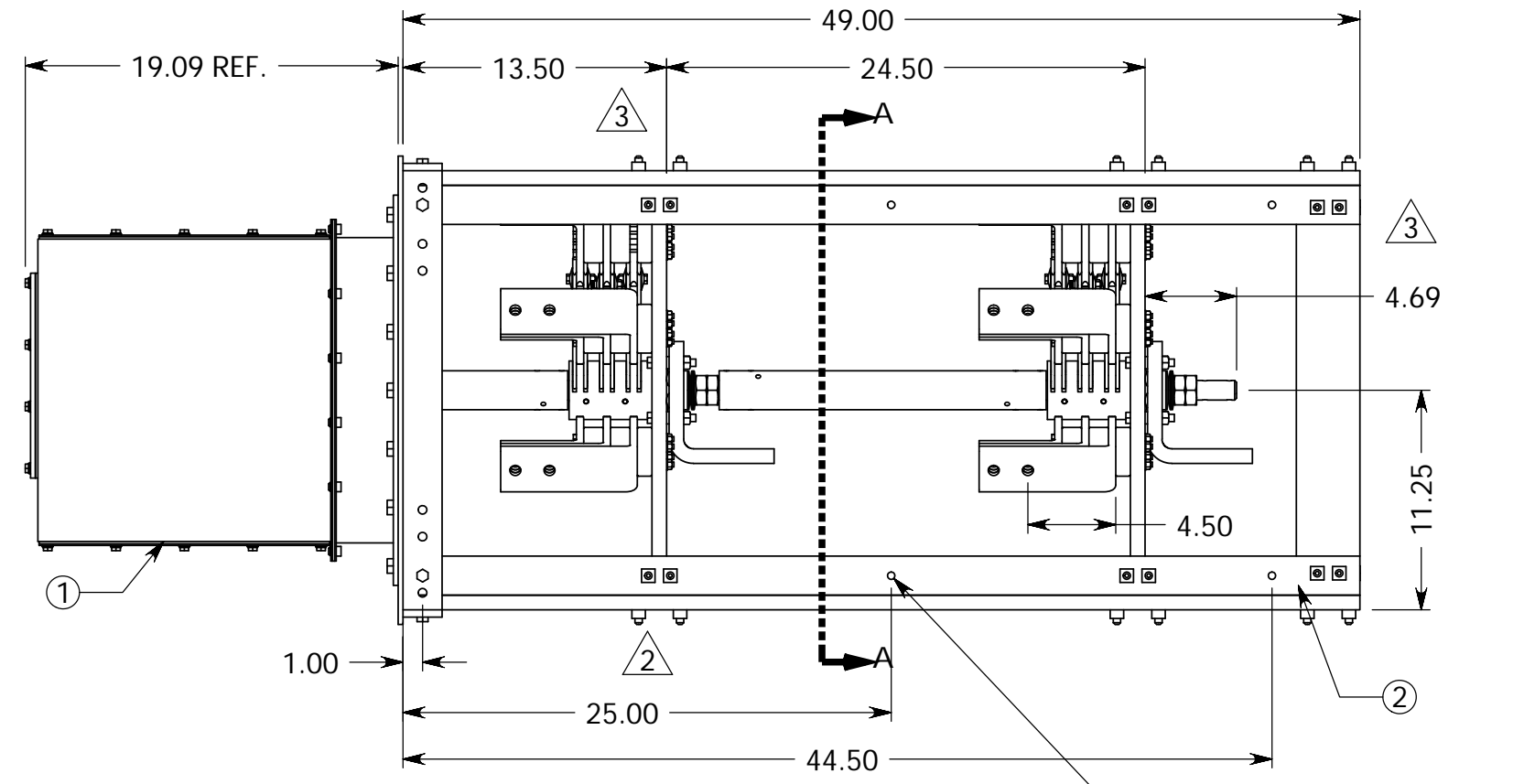
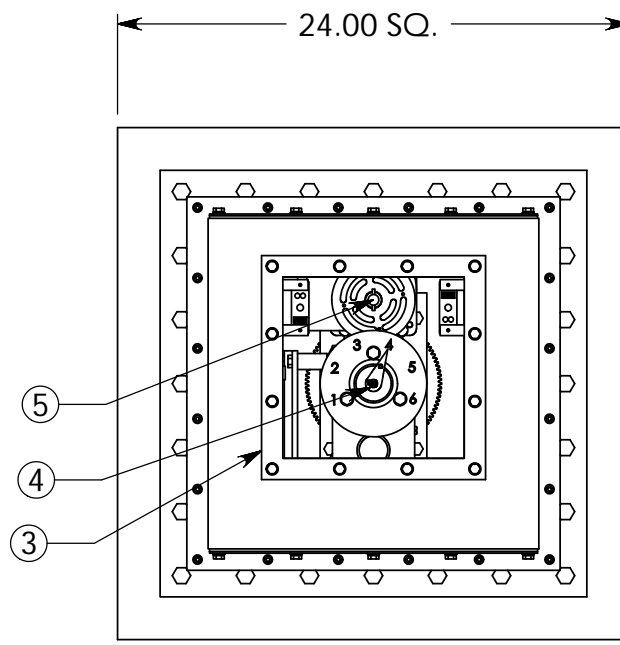
REF:

DATE:10-5-07

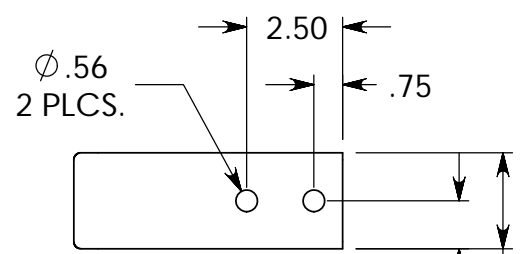
DWG. NO.

2D0400508SB3-000-00

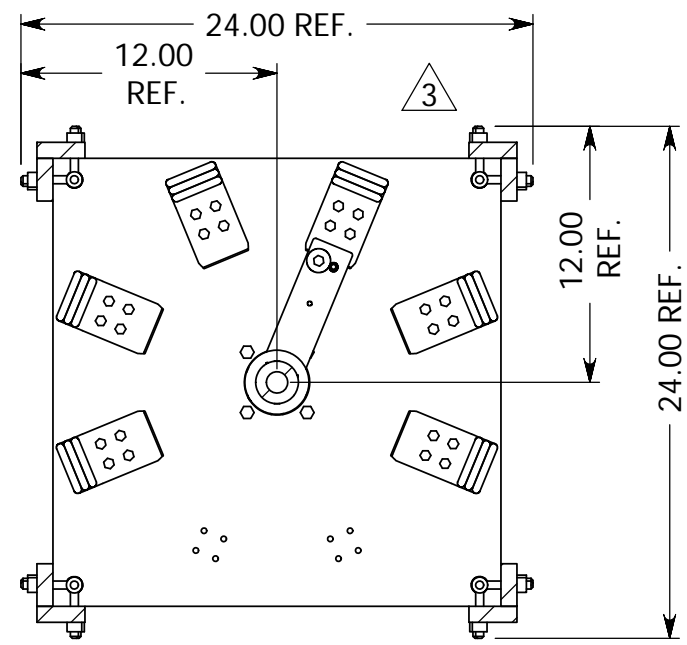
8 7 6 5 4 3 2 1



**CUSTOMER CONNECTION:
ROTOR BAR (.75 THK)**



**CUSTOMER CONNECTION:
CONTACT CLIP (.38 THK)**



SECTION A-A

Ø .38 MOUNTING HOLES
(16 TOTAL)

- NOTES:**
- 1) REMOVABLE TOP & BOTTOM PANELS GASKETED FOR OUTDOOR USE.
 - 2) SWITCH ASSEMBLY WITH SILVER PLATED CONTACTS.
 - 3) PLEXIGLASS VIEWING WINDOW WITH PRIMARY POWER INTERLOCKS & 5 AMP FUSE.
 - 4) MECHANICAL POSITION INDICATOR.
 - 5) PROVISION FOR MANUAL OPERATION.
 - 6) WIRING DIAGRAM DWG. # 99-401-06-00 USED TO WIRE SWITCH CONTROLS.
 - 7) SCHEMATIC DWG. # 99-402-06-00 USED TO REPRESENT WIRING.

REVISION NOTE: (02)
REVISED DECK MOUNTING
ADDED CUSTOMER CONNECTION VIEWS

REVISION NOTE: (03)
REVISED REAR SWITCH SUPPORTS AND DECK SUPPORTS
DIM 13.50 WAS 12.50
DIM 24.50 WAS 25.50

©COPYRIGHT 2000 THIS PRINT IS THE PROPERTY OF QUALITY SWITCH, INC. AND IS LOANED SUBJECT TO THE RETURN UPON DEMAND. ITS CONTENTS ARE CONFIDENTIAL AND MUST NOT BE COPIED OR SUBMITTED, IN ANY FORM, TO OUTSIDE PARTIES FOR USE OR EXAMINATION. ALL RIGHTS TO DESIGN OR INVENTION ARE RESERVED BY QUALITY SWITCH, INC.

QUALITY SWITCH, INC.
NEWTON FALLS, OHIO

UNLESS OTHERWISE SPECIFIED
DIMENSIONS ARE IN INCHES,
TOLERANCE ±.005, ANGLES ±0°30'

CAD GENERATED
DRAWING, DO
NOT MANUALLY
CHANGE

REF: MASS: 436.709 LBS.

CHKD		SCALE
D.L.S.		1:9
CHKD		SHEET OF
		1 3

TITLE:
**2 DECK 6 POS 2000 AMP
5.0 KV TAPCHANGER
FOR USE IN AIR**

REV	02	KMW 04/07/06 SEE REVISION NOTE: (02)					
REV	03	KMW 06/29/06 SEE REVISION NOTE: (03)					
STATION							
Q.C.	X	ENG	1	4	6b		
CNCM	SALES	X	2	5	6c	X	
CNCL			3	6a	7		

PLOT DATE: 10/25/2007
FILE: H:\2\2ka\2D2000506SB2-MMP-00
DFTM: R.M.N. DATE: 11/27/2001
DWG. NO:
2D2000506SB2-MMP-00

8 7 6 5 4 3 2 1

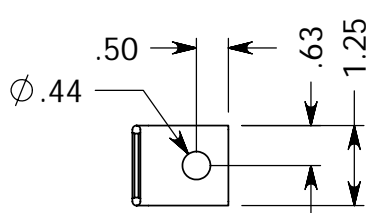
STATION	
O.C.	X
CNCM	
CNCL	
ENG	X
SALES	X
1	
2	
3	
4	
5	
6a	
6b	
6c	X
7	

NOTE:

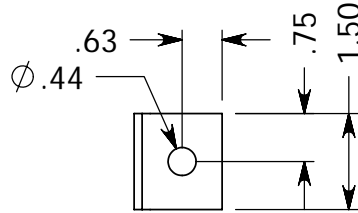
- 1) ITEM(S) SHOWN IN PHATOM LINES & INDEX PLATE NUTS TO BE SUPPLIED BY CUSTOMER.
- 2) HANDLE HAS A 5.75 SWING RADIUS.

REPRESENTATIVE TEST VALUES IN OIL:

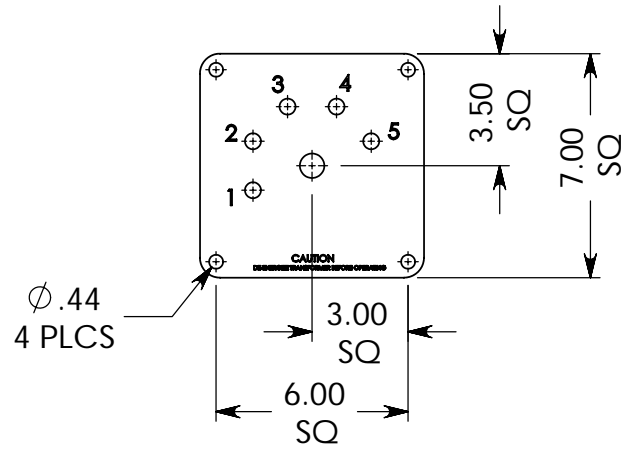
164KV FW MAXIMUM WITHSTAND INTERCONTACT
 2° C RISE OVER OIL AT 200 AMPS.



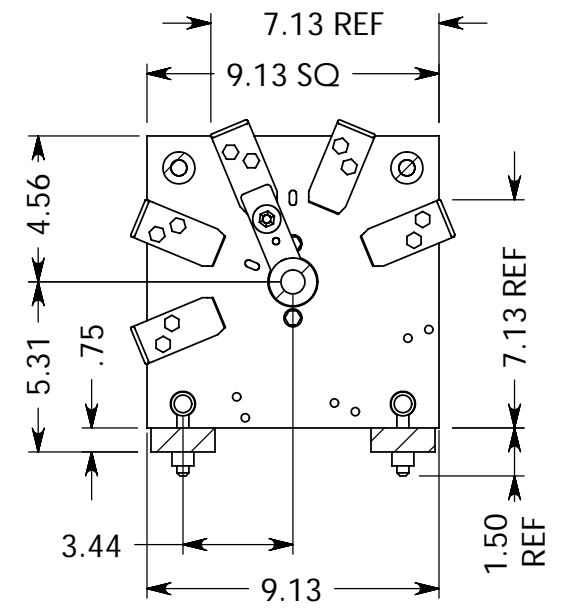
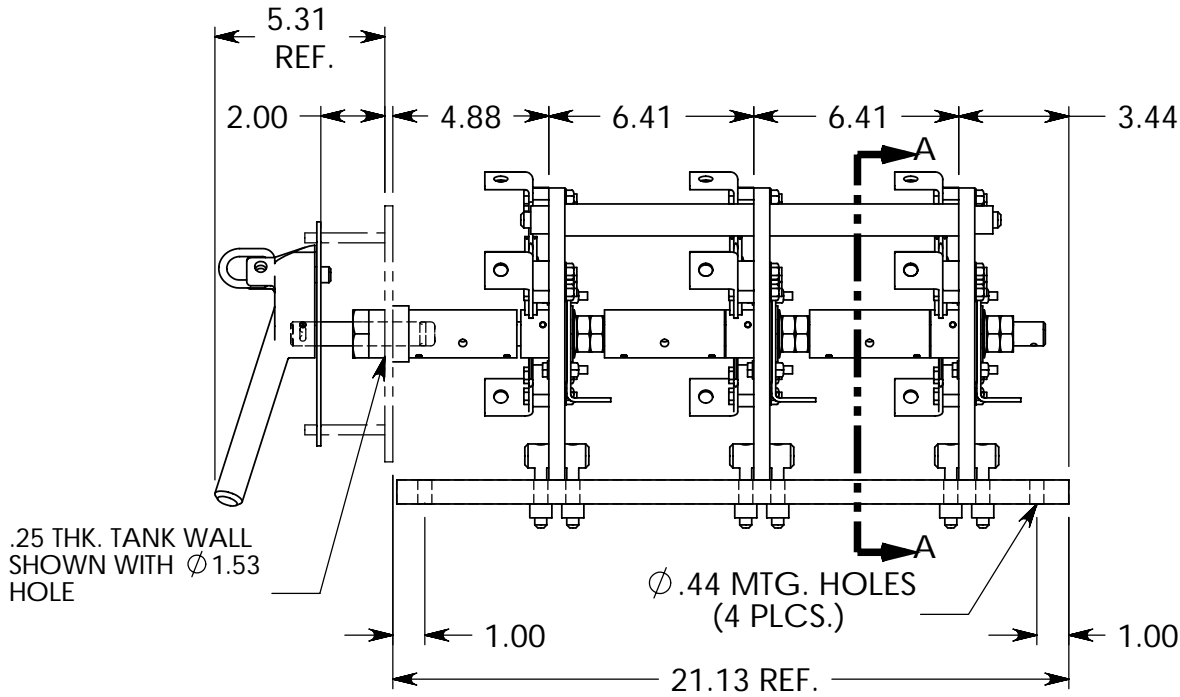
CUST. CONNECTION CONTACT CLIP



CUST. CONNECTION ROTOR BAR



VIEW OF INDEX PLATE



SECTION A-A

© COPYRIGHT 2000 THIS PRINT IS THE PROPERTY OF QUALITY SWITCH, INC. AND IS LOANED SUBJECT TO THE RETURN UPON DEMAND. ITS CONTENTS ARE CONFIDENTIAL AND MUST NOT BE COPIED OR SUBMITTED, IN ANY FORM, TO OUTSIDE PARTIES FOR USE OR EXAMINATION. ALL RIGHTS TO DESIGN OR INVENTION ARE RESERVED BY QUALITY SWITCH, INC.

QUALITY SWITCH, INC.
 NEWTON FALLS, OHIO

UNLESS OTHERWISE SPECIFIED
 DIMENSIONS ARE IN INCHES,
 TOLERANCE ±.005, ANGLES ±30'
 WEIGHT: 24.9 LBS. DFTM: D.L.S.

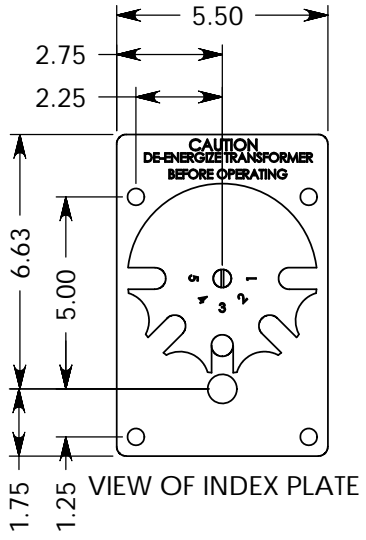
CAD GENERATED
 DRAWING, DO
 NOT MANUALLY
 CHANGE

MAT:	CHKD: J.A.S.	SCALE: 1:6
	CHKD:	SHEET 1 OF 3

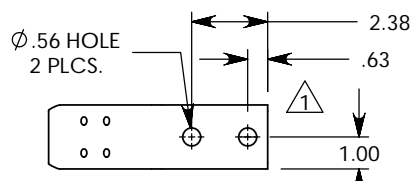
TITLE:
**3 DECK 5 POS 200 AMP
 110 KV BIL TAPCHANGER
 FOR USE IN OIL**

PLOT DATE:	3/27/2007
FILE:	\\Qserver\CAD\QS\2\200A\2L0201105
REF:	DATE: 3/26/2005
DWG. NO.	2L0201105SB3-000-00

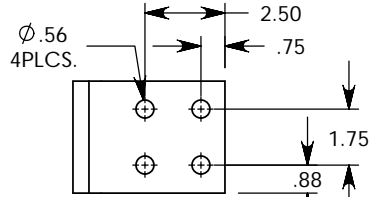
STATION
 O.C. X
 CNCL
 ENG X
 SALES X
 CAT
 1
 2
 3
 4
 5
 6a
 6b
 6c X
 6g
 7



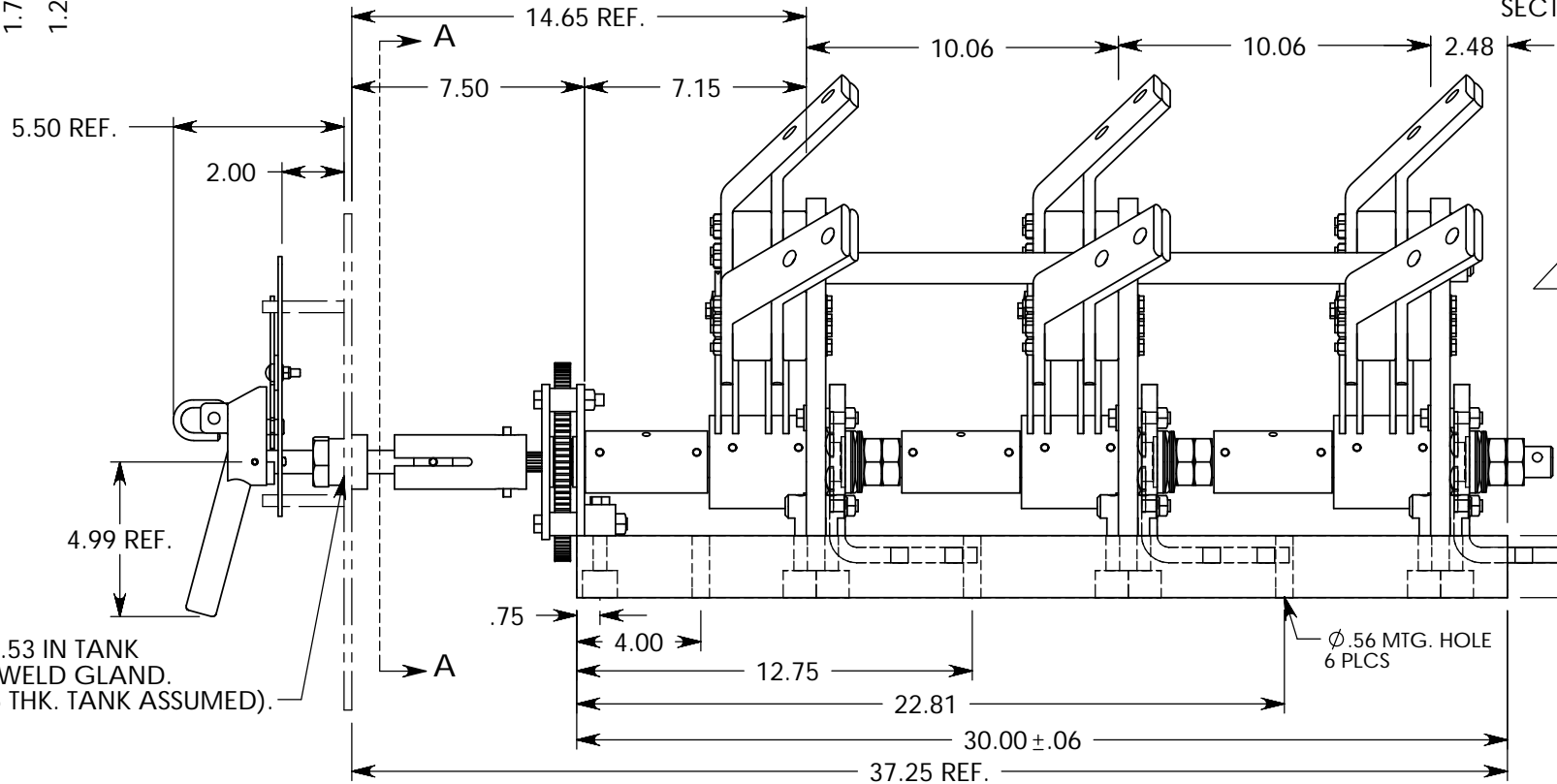
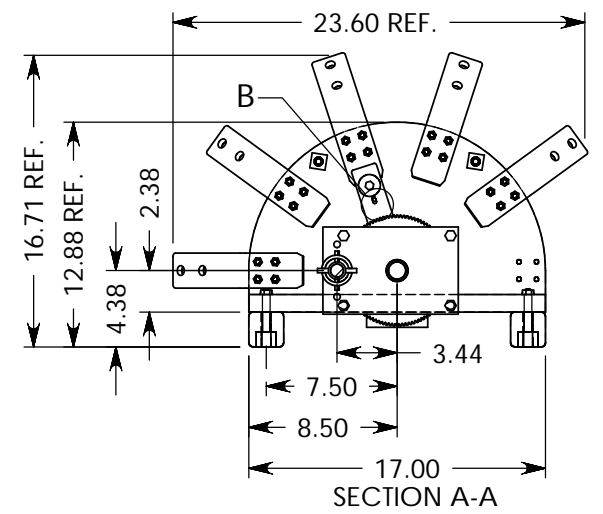
NOTE:
 1) OPERATING HANDLE ROTATES 360° CW FOR SWITCH TO MOVE CCW ONE POSITION.
 2) CONTACT PARTS ARE SILVER PLATED.
 3) ITEMS SHOWN IN PHANTOM LINES & INDEX PLATE NUTS ARE NOT SUPPLIED BY QUALITY SWITCH.



CUSTOMER CONNECTION:
 2 CONTACT CLIPS: 3/4 THK. STACKED



CUSTOMER CONNECTION:
 ROTOR BAR: 1/2" THK.



DETAIL B
 SCALE 1 : 6
 Ø.219 ALIGNMENT SLOT. INSERT Ø.188 PIN THROUGH 1 DECK AND ROTOR WHEN GENEVA WHEEL IS IN POS 3. REMOVE FOR OPERATION.

© COPYRIGHT 2000 THIS PRINT IS THE PROPERTY OF QUALITY SWITCH, INC. AND IS LOANED SUBJECT TO THE RETURN UPON DEMAND. ITS CONTENTS ARE CONFIDENTIAL AND MUST NOT BE COPIED OR SUBMITTED, IN ANY FORM, TO OUTSIDE PARTIES FOR USE OR EXAMINATION. ALL RIGHTS TO DESIGN OR INVENTION ARE RESERVED BY QUALITY SWITCH, INC.

QUALITY SWITCH, INC.
 NEWTON FALLS, OHIO

UNLESS OTHERWISE SPECIFIED DIMENSIONS ARE IN INCHES, TOLERANCE ±.005, ANGLES ±30'
 WEIGHT: 182.664 LBS. DFTM: D.A.L.
 CAD GENERATED DRAWING, DO NOT MANUALLY CHANGE

MAT:
 CHKD: J.A.S. SCALE 1:6
 CHKD: SHEET 1 OF 3

TITLE: **3 DECK 5 POS 2000 AMP 110 KV BIL TAPCHANGER FOR USE IN OIL**

PLOT DATE: 10/16/2007
 FILE: H:\2\2KA\2L2001105SB3-WCG-00-01
 REF: DATE: 01/12/05
 DWG. NO. 2L2001105SB3-WCG-00

D.A.L. 01-14-05 INCREASED HOLE SPACING ON CONTACT CLIP FOR CUST.

01

00

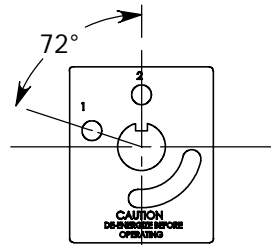
STATION	
O.C.	X
CNCM	
CNCL	
ENG	X
SALES	X
1	
2	X
3	
4	
5	
6A	
6B	
6C	
7	

REPRESENTATIVE TEST VALUES IN OIL:

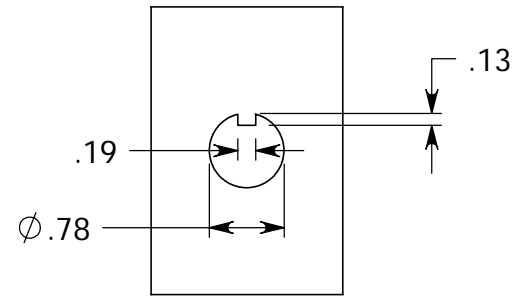
IMPULSE: (SERIES OR PARALLEL)
 160 KV BIL WITHSTAND
 165 KV BIL BREAKDOWN

RATING :
 15KV (125KV BIL)

MAX. CONTINUOUS CURRENT IN OIL-125 AMPS
 (10° C RISE OF TERMINAL OVER OIL TEMP.)



INDEX PLATE

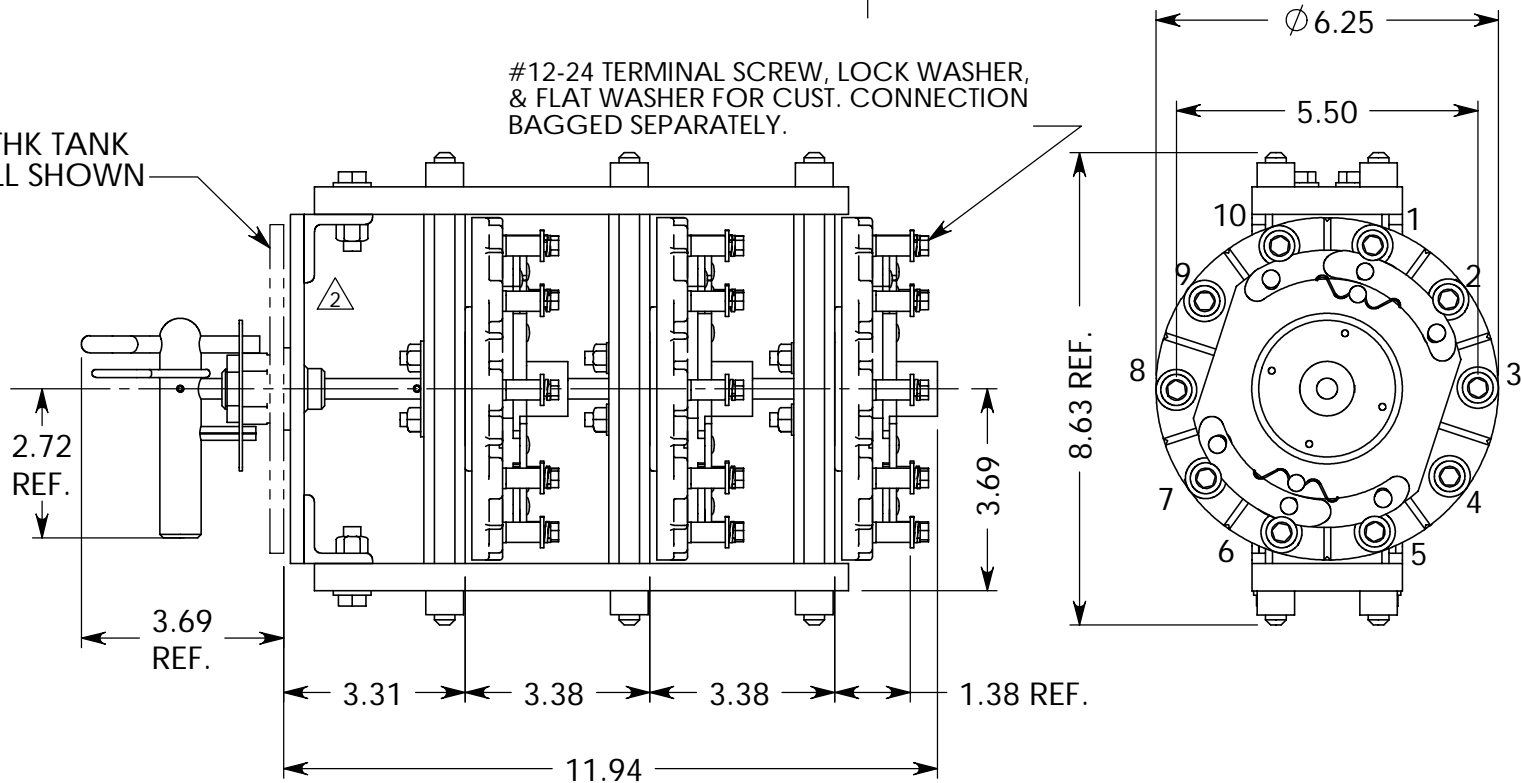


TANK HOLE DETAIL

POSITION	CONNECTS STUDS
③ 1	2-3-4, 7-8-9
2	10-1-2, 5-6-7

#12-24 TERMINAL SCREW, LOCK WASHER,
 & FLAT WASHER FOR CUST. CONNECTION
 BAGGED SEPARATELY.

.25 THK TANK
 WALL SHOWN



© COPYRIGHT 2000 THIS PRINT IS THE PROPERTY OF QUALITY SWITCH, INC. AND IS LOANED SUBJECT TO THE RETURN UPON DEMAND. ITS CONTENTS ARE CONFIDENTIAL AND MUST NOT BE COPIED OR SUBMITTED, IN ANY FORM, TO OUTSIDE PARTIES FOR USE OR EXAMINATION. ALL RIGHTS TO DESIGN OR INVENTION ARE RESERVED BY QUALITY SWITCH, INC.

QUALITY SWITCH, INC.
 NEWTON FALLS, OHIO

UNLESS OTHERWISE SPECIFIED,
 DIMENSIONS ARE IN INCHES,
 TOLERANCE ±.005, ANGLES ±30°
 WEIGHT: 11.511 LBS. DFTM: J.A.S.

CAD GENERATED
 DRAWING, DO
 NOT MANUALLY
 CHANGE

MAT:

CHKD: D.L.S.

SCALE 1:4

CHKD:

SHEET 1 OF 3

TITLE:
3 DECK 2 POS. 125 AMP.
125KV BIL DUAL VOLTAGE
SWITCH FOR USE IN OIL

PLOT DATE: 3/15/03

FILE: F:\QS\3\3L0121202PS3-WL0-00

REF: 60-118

DATE: 11-25-02

DWG. NO.
 3L0121202PS3-WL0-00

E 03 J.A.S. 03-15-03 ADDED NUMBERS TO STUDS & NOTE

E 02 P.L.E. 2-12-03 ROTATED MTG. BRACKET 180 DEGREES.

STATION	
O.C.	X
CNCM	
CNCL	
ENG	X
SALES	X
CAT	X
1	
2	
3	
4	X
5	
6a	
6b	
6c	
6d	
7	

REPRESENTATIVE TEST VALUES IN OIL:

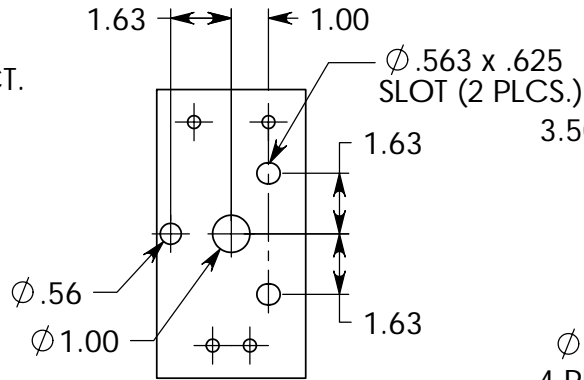
127KV FW MAXIMUM WITHSTAND INTERCONTACT.
5 °C RISE OVER OIL AT 200 AMPS.

NOTE:

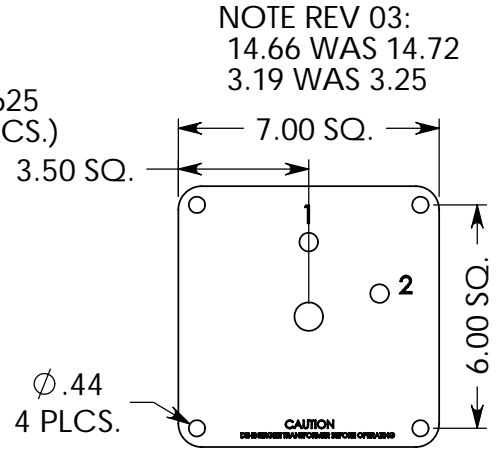
1. MOUNTING STUDS & HARDWARE SUPPLIED BY CUSTOMER, .38 x 1.50 RECOMMENDED.
2. SWITCH SHOWN IN POSITION 1, POSITION 2 CW 72° FROM FRONT OF SWITCH.

POSITION CONNECTS STUDS

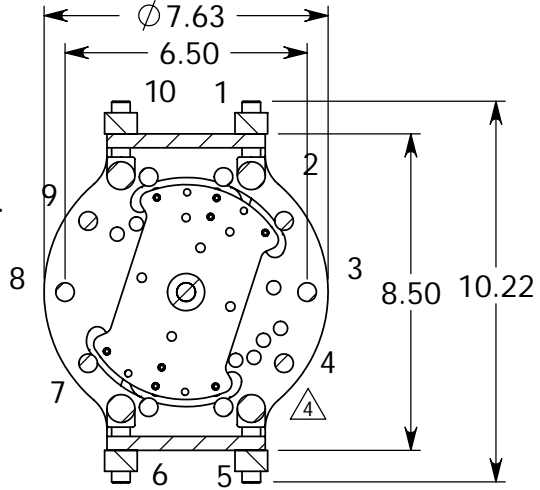
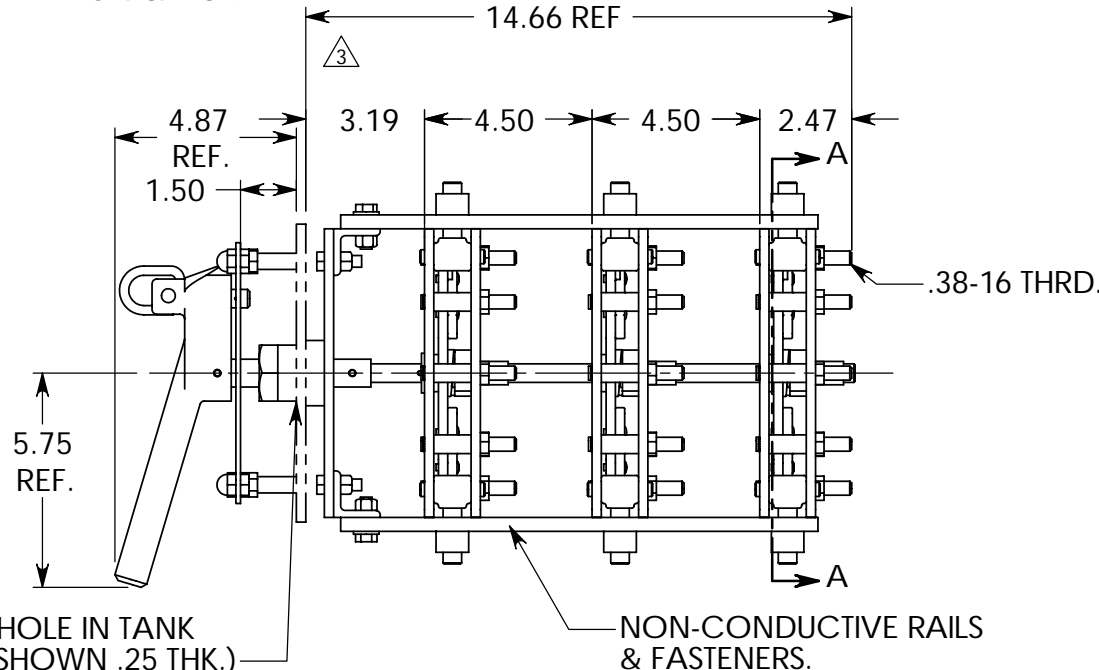
1	10-1-2 & 5-6-7
2	2-3-4 & 7-8-9



FRONT MOUNTING PLATE
STUD LAYOUT DIMENSIONS



INDEX PLATE
HANDLE NOT SHOWN



SECTION A-A

© COPYRIGHT 2000 THIS PRINT IS THE PROPERTY OF QUALITY SWITCH, INC. AND IS LOANED SUBJECT TO THE RETURN UPON DEMAND. ITS CONTENTS ARE CONFIDENTIAL AND MUST NOT BE COPIED OR SUBMITTED, IN ANY FORM, TO OUTSIDE PARTIES FOR USE OR EXAMINATION. ALL RIGHTS TO DESIGN OR INVENTION ARE RESERVED BY QUALITY SWITCH, INC.

QUALITY SWITCH, INC.
NEWTON FALLS, OHIO

UNLESS OTHERWISE SPECIFIED
DIMENSIONS ARE IN INCHES,
TOLERANCE ±.005, ANGLES ±30°
WEIGHT: 19.68 LBS. DFTM: P.L.E.

CAD GENERATED
DRAWING, DO
NOT MANUALLY
CHANGE

MAT:	
CHKD: J.A.S.	SCALE 1:5
CHKD:	SHEET 1 OF 3

TITLE:
**3 DECK 2 POS 200 AMP
95 KV BIL DUAL VOLTAGE
FOR USE IN OIL**

PLOT DATE: 1/11/2005	
FILE: F:\QS\3\200A\3L0200902PS3-000-00	
REF: 60-119	DATE: 04-16-04
DWG. NO. 3L0200902PS3-000-00	

D.L.S. 06-07-04 UPDATED DECKS, CHANGED PLATE TO WASHER
D.L.S. 08-08-01 14-469 WAS 14-406, 3-000 WAS 2-938, SEE NOTE IV
R 03

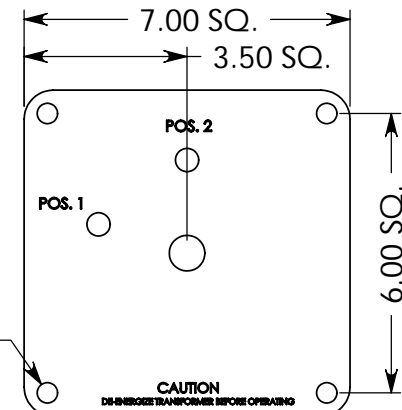
STATION	
Q.C.	X
CNCM	
CNCL	
ENG	X
SALES	X
1	
2	
3	
4	X
5	
6a	
6b	
6c	
7	

NOTE: ¹ ITEM(S) SHOWN IN PHANTOM LINES SUPPLIED BY CUSTOMER.

REPRESENTATIVE TEST VALUES IN OIL:
205KV FW MAXIMUM WITHSTAND
6 °C RISE OVER OIL AT 500 AMPS.

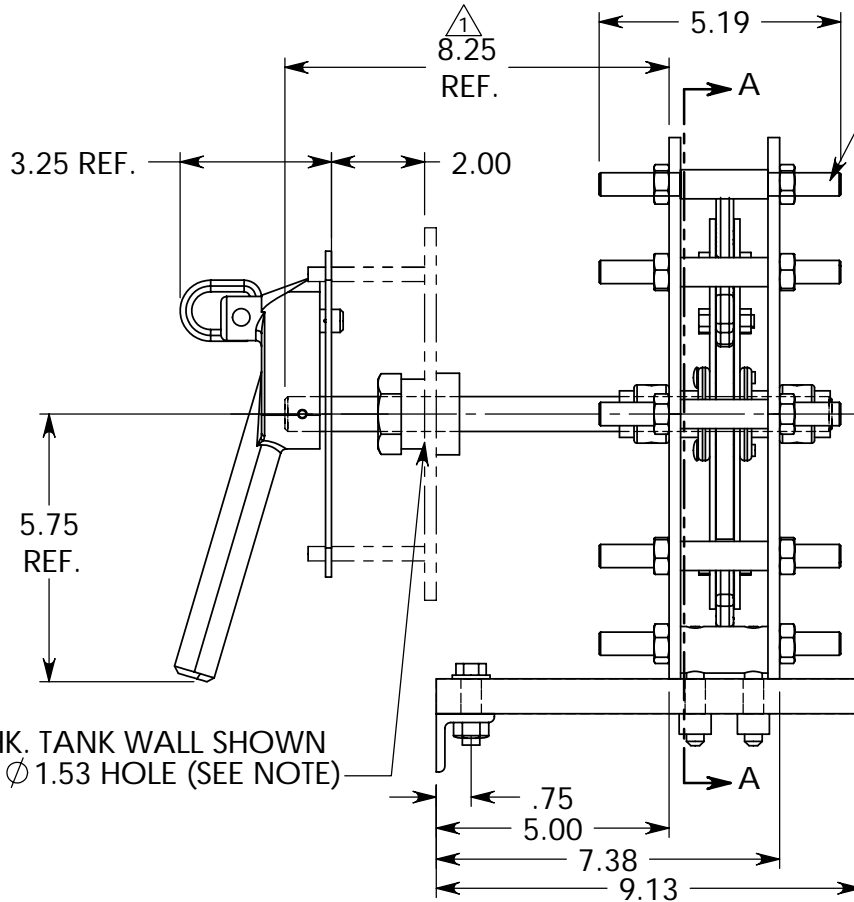
REVISION NOTE: (01)
ADDED CONNECTIONS NOTE
ADDED 8.25 DIM
REVISED NOTE

¹ POSITION CONNECTS STUDS
1 3-4, 6-7 & 9-10
2 1-2, 5-6, & 8-9
(SWITCH SHOWN IN POSITION 2)

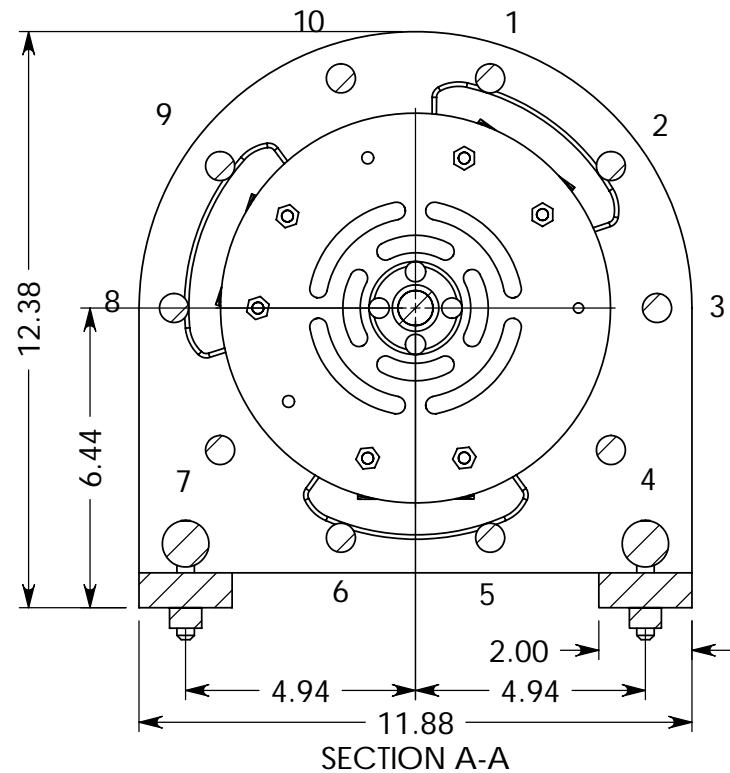


Ø .44
4 PLCS.

INDEX PLATE
HANDLE NOT SHOWN



.50-13 UNC 2A
THRD.



© COPYRIGHT 2000 THIS PRINT IS THE PROPERTY OF QUALITY SWITCH, INC. AND IS LOANED SUBJECT TO THE RETURN UPON DEMAND. ITS CONTENTS ARE CONFIDENTIAL AND MUST NOT BE COPIED OR SUBMITTED, IN ANY FORM, TO OUTSIDE PARTIES FOR USE OR EXAMINATION. ALL RIGHTS TO DESIGN OR INVENTION ARE RESERVED BY QUALITY SWITCH, INC.

QUALITY SWITCH, INC.
NEWTON FALLS, OHIO

UNLESS OTHERWISE SPECIFIED
DIMENSIONS ARE IN INCHES,
TOLERANCE ±.005, ANGLES ±30°
WEIGHT: 18.46 LBS., DFTM: R.M.N.

CAD GENERATED
DRAWING, DO
NOT MANUALLY
CHANGE

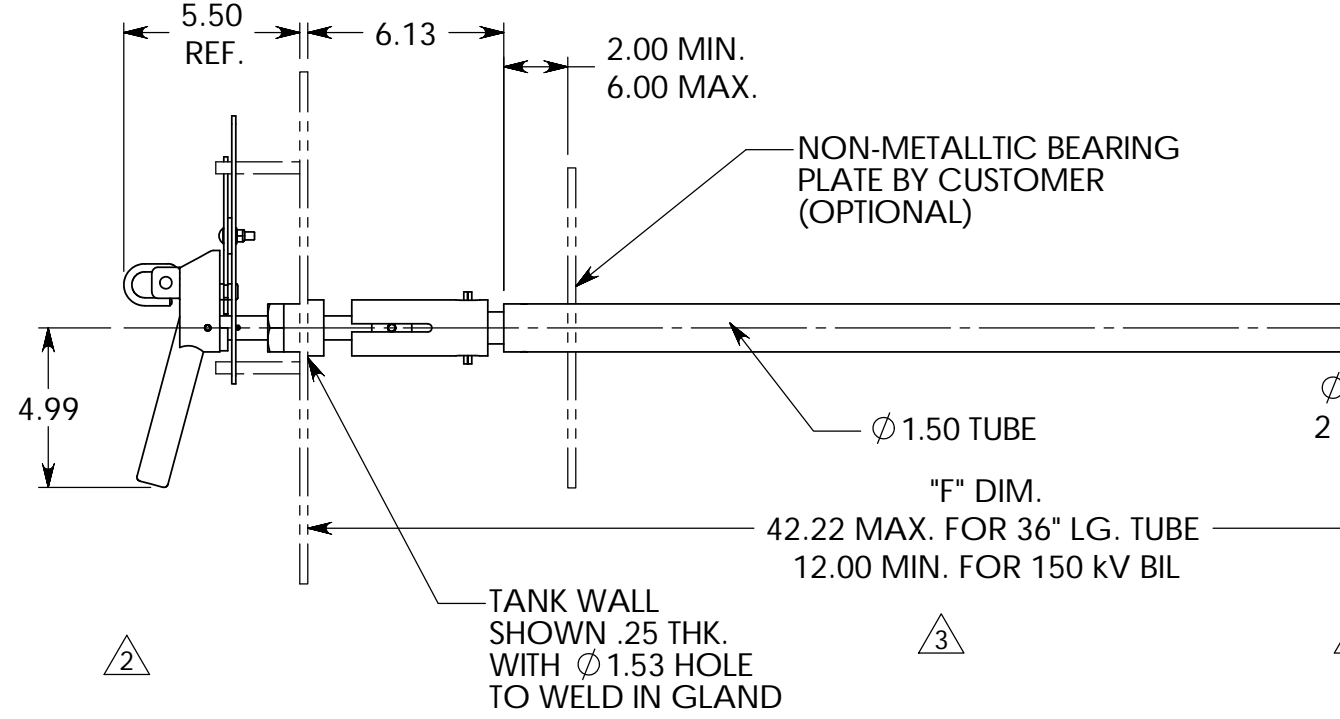
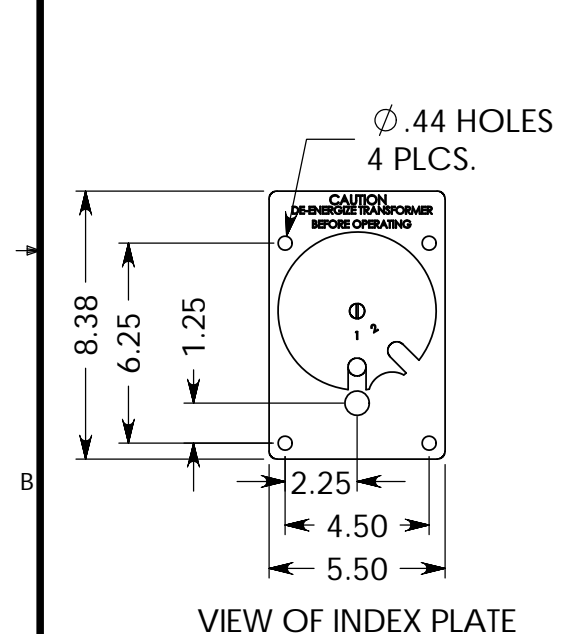
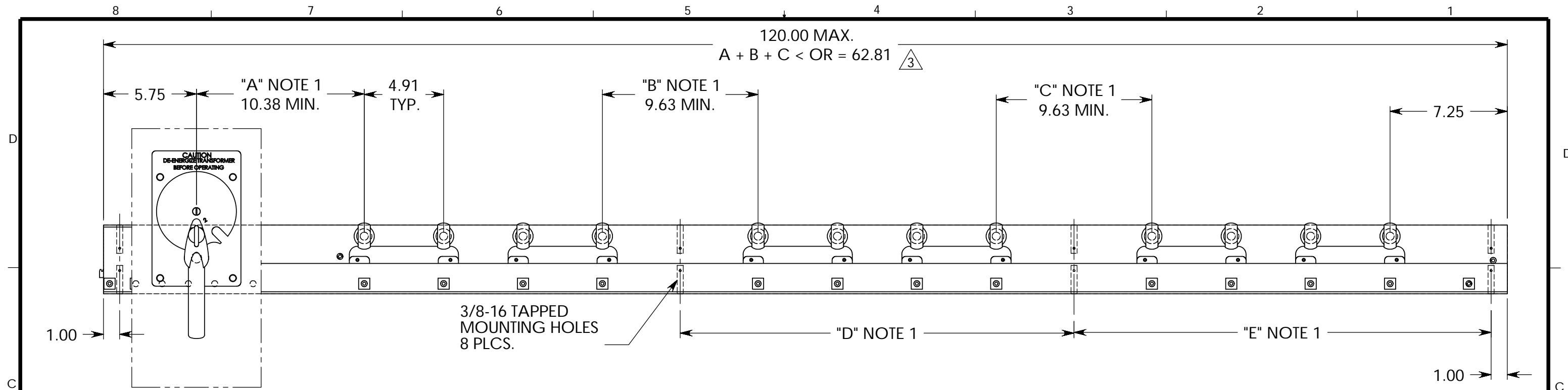
MAT:	
CHKD: D.L.S.	SCALE 1:4
CHKD:	SHEET 1 OF 3

**1 DECK 2 POS 500 AMP
150KV BIL DELTA-WYE
FOR USE IN OIL**

PLOT DATE: 1/8/2007	
FILE: Y:\QS\3\500A\150KV\B\3L0501502TS1-000-00	
REF: 60-143 Rev6	DATE: 10/2/2002
DWG. NO.	3L0501502TS1-000-00

R 01 KMW 10/20/05 SEE REVISION NOTE: (01)

R 00



- NOTES:**
- 1) DIMENSIONS TO BE SPECIFIED BY CUSTOMER. -WHEN SPECIFYING DIMENSIONS A, B, & C, A+B+C MUST BE LESS THAN OR EQUAL TO 62.81" IN ORDER TO KEEP THE OVERALL LENGTH LESS THAN OR EQUAL TO 120".
 - 2) DRIVE TUBE SUPPLIED 36" LG.-CAN BE CUT TO LENGTH BY CUSTOMER OR QUALITY SWITCH CAN CUT TO LENGTH IF "F" DIM. IS SUPPLIED BY CUSTOMER.
 - 3) SPECIFY LETTERS OR NUMBERS FOR INDEX PLATE.
 - 4) CUSTOMER TO DRILL AND PIN TUBE AT ASSEMBLY AS REQUIRED
 - 5) ITEM(S) SHOWN IN PHANTOM LINES & INDEX PLATE MOUNTING HARDWARE ARE NOT SUPPLIED BY QUALITY SWITCH.

REPRESENTATIVE TEST VALUES IN OIL:
 210 KV FW MAXIMUM WITHSTAND INTERCONTACT & TO GROUND
 8°C RISE OVER OIL AT 1000 AMPS.

©COPYRIGHT 2000 THIS PRINT IS THE PROPERTY OF QUALITY SWITCH, INC. AND IS LOANED SUBJECT TO THE RETURN UPON DEMAND. ITS CONTENTS ARE CONFIDENTIAL AND MUST NOT BE COPIED OR SUBMITTED, IN ANY FORM, TO OUTSIDE PARTIES FOR USE OR EXAMINATION. ALL RIGHTS TO DESIGN OR INVENTION ARE RESERVED BY QUALITY SWITCH, INC.

QUALITY SWITCH, INC.
 NEWTON FALLS, OHIO

UNLESS OTHERWISE SPECIFIED DIMENSIONS ARE IN INCHES, TOLERANCE ±.005, ANGLES ±0°30'

CAD GENERATED DRAWING, DO NOT MANUALLY CHANGE

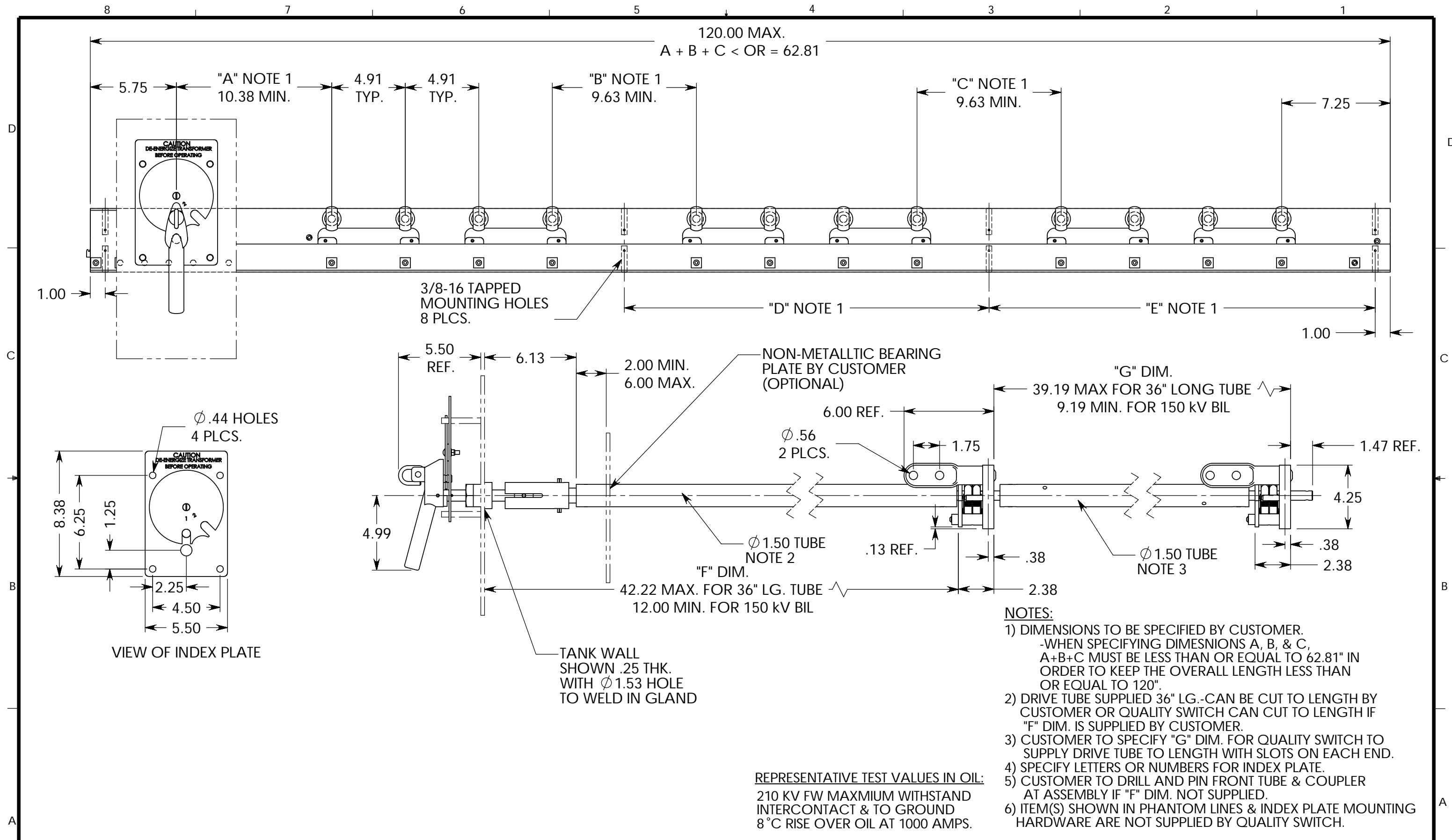
REF: MASS: 72.090 LBS.

MAT:	
CHKD D.L.S.	SCALE 1:6
CHKD	SHEET OF 1 3

TITLE: **DUAL VOLTAGE 3 PHASE
 2 POS 1000 AMP 150 KV BIL
 FOR USE IN OIL**

REV	02	REMOVED NOTE \$ UPDATE SWITCH W/NEW PARTS R.M.N. 7/25/03
REV	03	J.A.S. 08-16-07 REVISED & ADDED NOTES ABOUT MAX. LENGTH
STATION		
Q.C.	X	ENG X 1 4 6b
CNCM	SALES X	2 5 6c
CNCL		3 6a X 7

PLOT DATE: 10/17/2007
 FILE: H:\3\1KA\150KV BIL\3L1001502LS3-WCL-00
 DFTM: R.M.N. DATE: 1/20/2002
 DWG. NO: 3L1001502LS3-WCL-00



©COPYRIGHT 2000 THIS PRINT IS THE PROPERTY OF QUALITY SWITCH, INC. AND IS LOANED SUBJECT TO THE RETURN UPON DEMAND. ITS CONTENTS ARE CONFIDENTIAL AND MUST NOT BE COPIED OR SUBMITTED, IN ANY FORM, TO OUTSIDE PARTIES FOR USE OR EXAMINATION. ALL RIGHTS TO DESIGN OR INVENTION ARE RESERVED BY QUALITY SWITCH, INC.

QUALITY SWITCH, INC.
NEWTON FALLS, OHIO

UNLESS OTHERWISE SPECIFIED DIMENSIONS ARE IN INCHES, TOLERANCE \pm .005, ANGLES \pm 0°30'

CAD GENERATED DRAWING, DO NOT MANUALLY CHANGE

REF: MASS: 137.617 LBS.

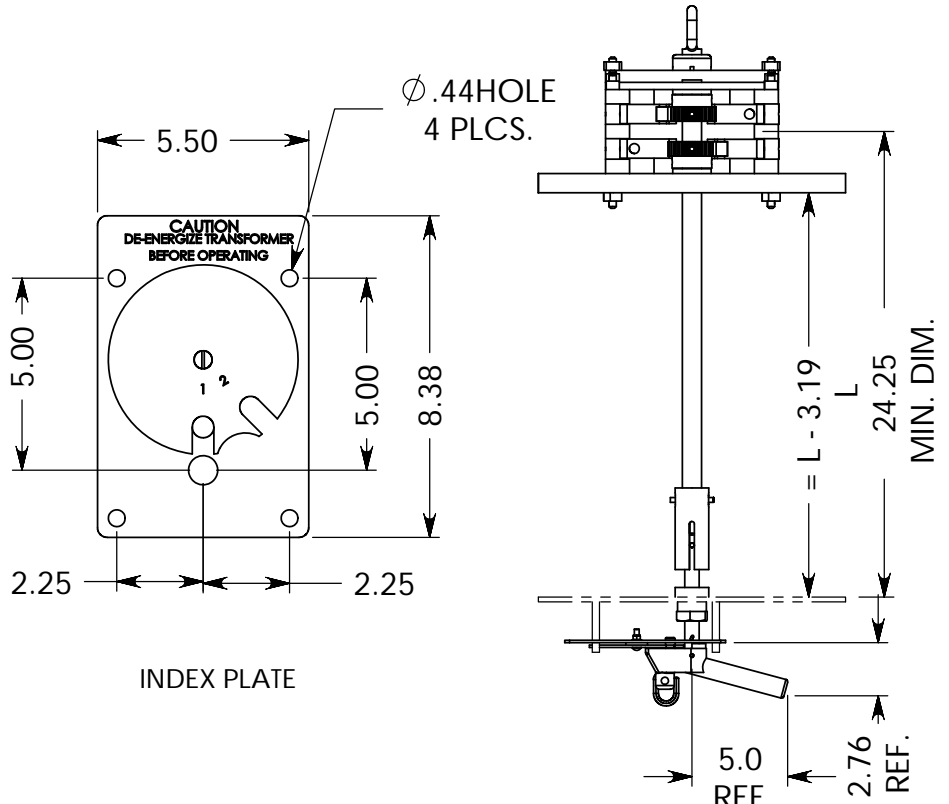
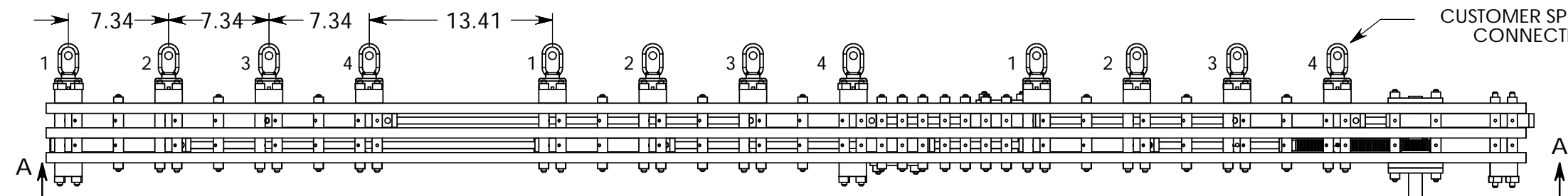
MAT:	SCALE
CHKD D.L.S.	1:6
CHKD	SHEET OF
	1 3

TITLE:
**DUAL VOLTAGE 6 DECK
2 POS 1000 AMP 150 KV BIL
FOR USE IN OIL**

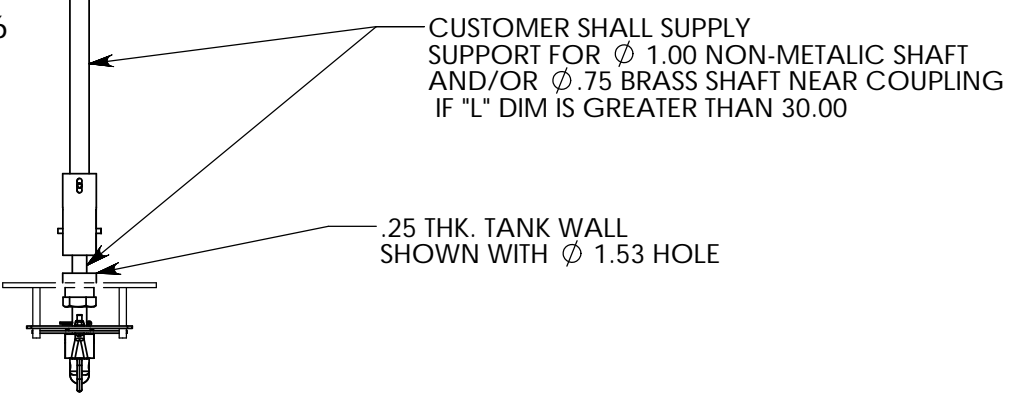
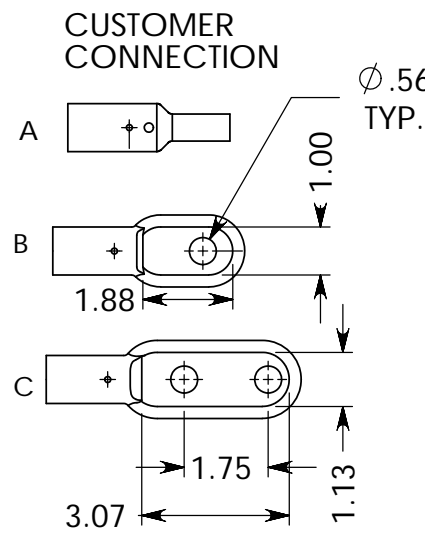
REV	00	STATION
Q.C.	X	ENG X 1 4 6b
CNCM	SALES X 2 5 6c	
CNCL		3 6a X 7

PLOT DATE: 10/17/2007
FILE: H:\3\1KA\150KV BIL\3L1001502LS6-WCL-00
DFTM: J.A.S. DATE: 9/20/2007
DWG. NO:
3L1001502LS6-WCL-00

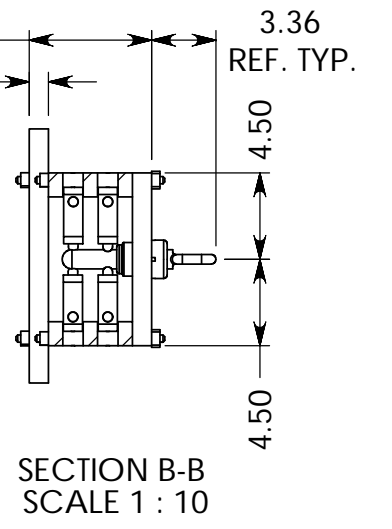
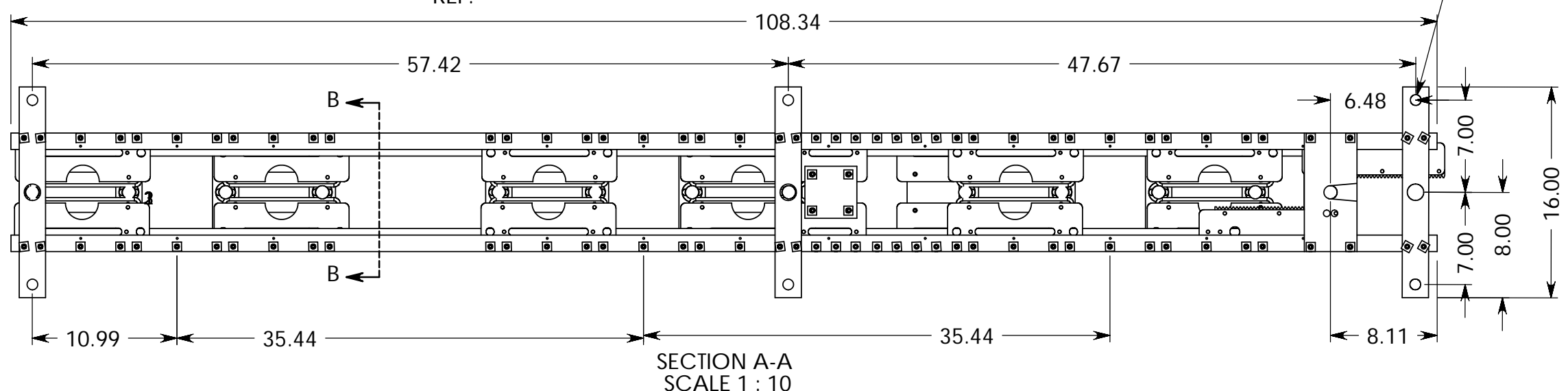
SWITCH C.L. TO TANK WALL CHART	
ITEM NO.	"L" LENGTH
00	24.25
01	25.25



- NOTES:
1. POSITION 1 IS PARALLEL CONNECTS 1-2 & 3-4
 2. CUSTOMER TO SPECIFY CUSTOMER CONNECTION TYPE SEE DRAWING
 3. CUSTOMER TO SPECIFY CRIMP SIZE IF STYLE "A" IS USED SEE PART 60-303-XX
 4. CUSTOMER TO SPECIFY "L" DIM.
 5. CUSTOMER TO SPECIFY NUMBERS OR LETTERS ON INDEX PLATE



REPRESENTATIVE TEST VALUES IN OIL:
 PASSED 650 KV FW INTERCONTACT, PASSED 950 KV FW PHASE TO PHASE
 185 KV RMS. 60 HZ. 1 MIN. HOLD INTERCONTACT
 14 °C RISE AT 1000 AMP, 25 °C RISE AT 2000 AMP
 2.09 SEC SHORT CIRCUIT TEST PASSED 15.06 KA SYM, 26.72 KA PEAK
 NOTE MOVING AND STATIONARY CONTACTS SILVER PLATED



©COPYRIGHT 2000 THIS PRINT IS THE PROPERTY OF QUALITY SWITCH, INC. AND IS LOANED SUBJECT TO THE RETURN UPON DEMAND. ITS CONTENTS ARE CONFIDENTIAL AND MUST NOT BE COPIED OR SUBMITTED, IN ANY FORM, TO OUTSIDE PARTIES FOR USE OR EXAMINATION. ALL RIGHTS TO DESIGN OR INVENTION ARE RESERVED BY QUALITY SWITCH, INC.

QUALITY SWITCH, INC.
 NEWTON FALLS, OHIO

UNLESS OTHERWISE SPECIFIED DIMENSIONS ARE IN INCHES, TOLERANCE ±.005, ANGLES ±0°30'

CAD GENERATED DRAWING, DO NOT MANUALLY CHANGE

REF: MASS: 130.524 LBS.

MAT:	SCALE
CHKD DLS	1:16
CHKD	SHEET OF
	1 3

TITLE: **LINEAR SERIES PARALLEL 650 KV BIL PHASE TO PHASE 450 KV BIL INTERCONTACT 2 POS. 1000 AMP THREE PHASE**

REV 02	DPW CHANGE DECK ASSEMBLY FROM -176-XX TO -177-XX 08/09/07
REV 03	DPW CORRECTED ALTHREAD 30-473-38 & NUT 31-472-01 COUNT
STATION	
Q.C.	X ENG X 1 4 6b 6d
CNCM	SALES 2 5 6c 7
CNCL	CAT 3 6a X 6g

PLOT DATE: 10/16/2007

FILE: H:\3\1KA\J\3L100LJ02LS3-000-XX-03

DFTM: DPW DATE: 07/23/07

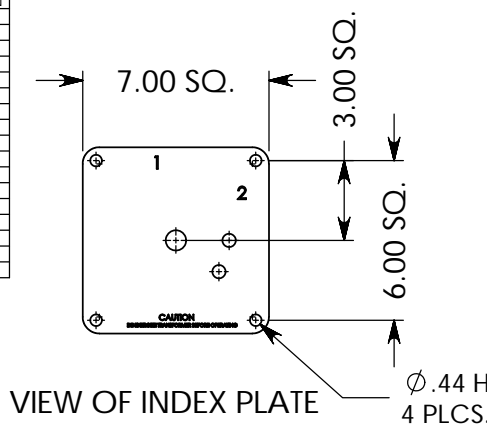
DWG. NO: 3L100LJ02LS3-000-XX

STATION	
Q.C.	X
CNCM	
CNCL	
ENG	X
SALES	X
CAT	
1	
2	
3	
4	X
5	
6a	
6b	
6c	
6d	
6e	
7	

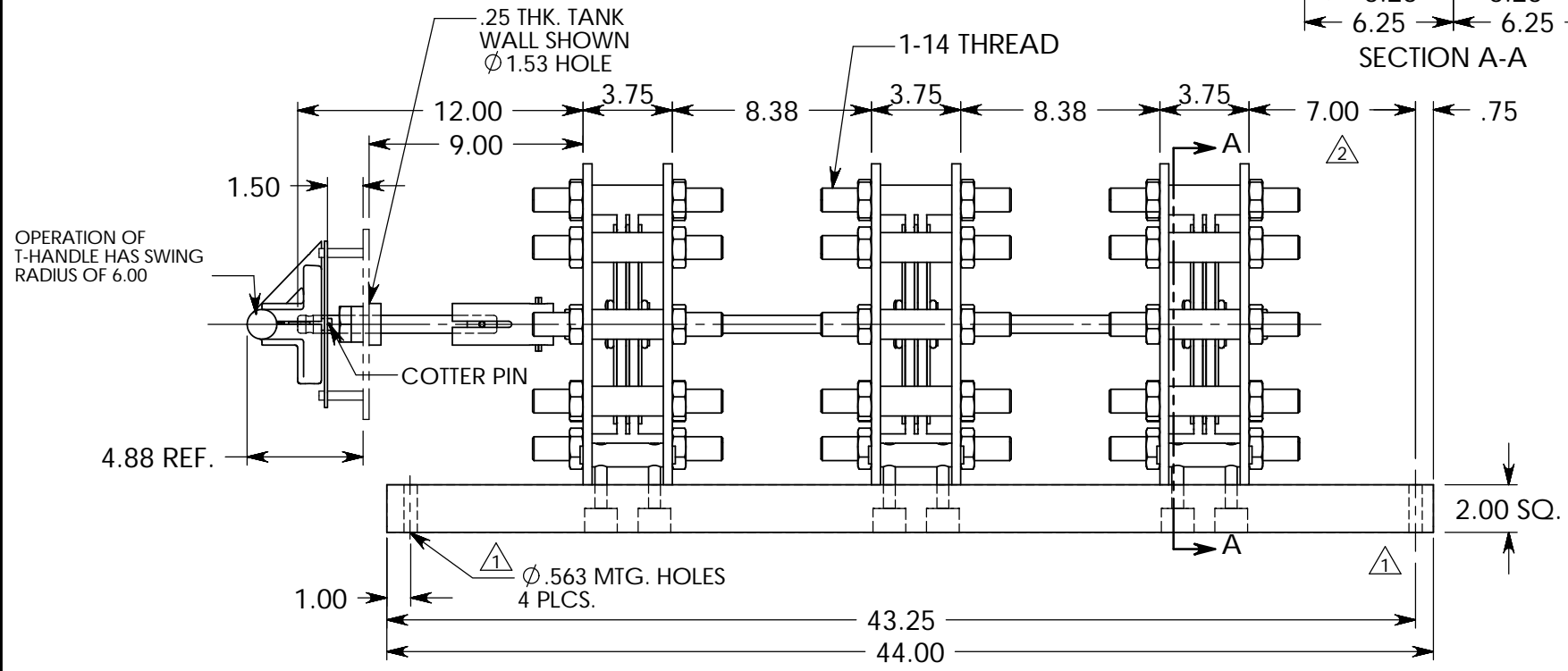
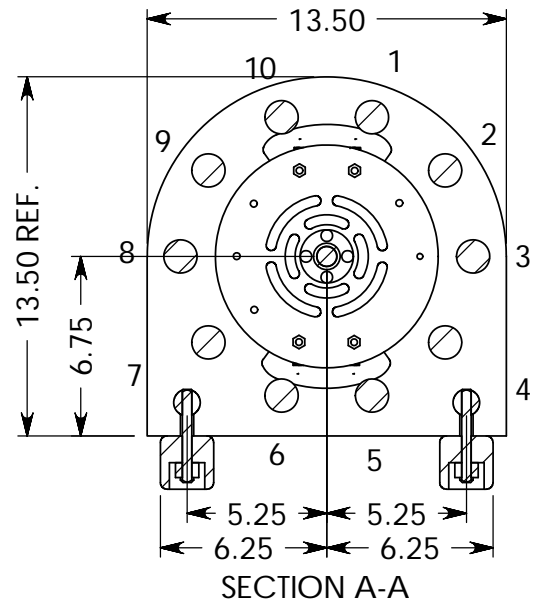
8 7 6 5 4 3 2 1

REPRESENTATIVE TEST VALUES IN OIL:
 205KV FW MAXIMUM WITHSTAND
 10° RISE OVER OIL AT 1000 AMPS.

- NOTE:**
- 1) ITEMS SHOWN IN PHANTOM LINES & INDEX PLATE NUTS ARE NOT SUPPLIED BY QUALITY SWITCH.
 - 2) SWITCH ROTATES CLOCKWISE 36°.
 - 3) FRONT SHAFT AND HANDLE DRILLED STANDARD, CUSTOMER TO ADVISE IF NOT DRILLED.



POSITION	CONNECTS STUDS
A/1	1-10 & 5-6
B/2	1-2 & 6-7



OPERATION OF T-HANDLE HAS SWING RADIUS OF 6.00

COTTER PIN

D.L.S. 10-05-06 ADDED 7.00 DIM
 R 02
 01 D.A.L. 08-15-05 REPLACED 0.50" MTG. SLOTS W/ 0.563" HOLES

© COPYRIGHT 2000 THIS PRINT IS THE PROPERTY OF QUALITY SWITCH, INC. AND IS LOANED SUBJECT TO THE RETURN UPON DEMAND. ITS' CONTENTS ARE CONFIDENTIAL AND MUST NOT BE COPIED OR SUBMITTED, IN ANY FORM, TO OUTSIDE PARTIES FOR USE OR EXAMINATION. ALL RIGHTS TO DESIGN OR INVENTION ARE RESERVED BY QUALITY SWITCH, INC.

QUALITY SWITCH, INC.
 NEWTON FALLS, OHIO

UNLESS OTHERWISE SPECIFIED
 DIMENSIONS ARE IN INCHES,
 TOLERANCE ±.005, ANGLES ±30'
 WEIGHT: 79.5 LBS. DFTM: R.M.N.

CAD GENERATED
 DRAWING, DO
 NOT MANUALLY
 CHANGE

MAT:	
CHKD: K.M.W.	SCALE 1:7
CHKD:	SHEET 1 OF 3

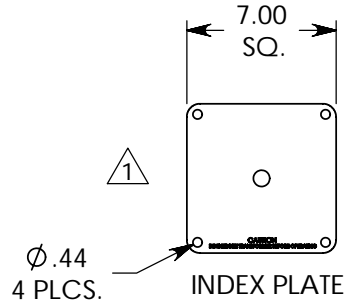
**3 DECK 2 POS 1000 AMP
 150KV BIL DUAL VOLTAGE
 FOR USE IN OIL**

PLOT DATE: 3/22/2007
 FILE: H:\3\1KA\3L1001502DS3-WCP-01
 REF: DATE: 3/25/2003
 DWG. NO. 3L1001502DS3-WCP-01

8 7 6 5 4 3 2 1

STATION	
O.C.	X
CNCM	
CNCL	
ENG	X
SALES	X
1	
2	
3	
4	X
5	
6a	
6b	
6c	
7	

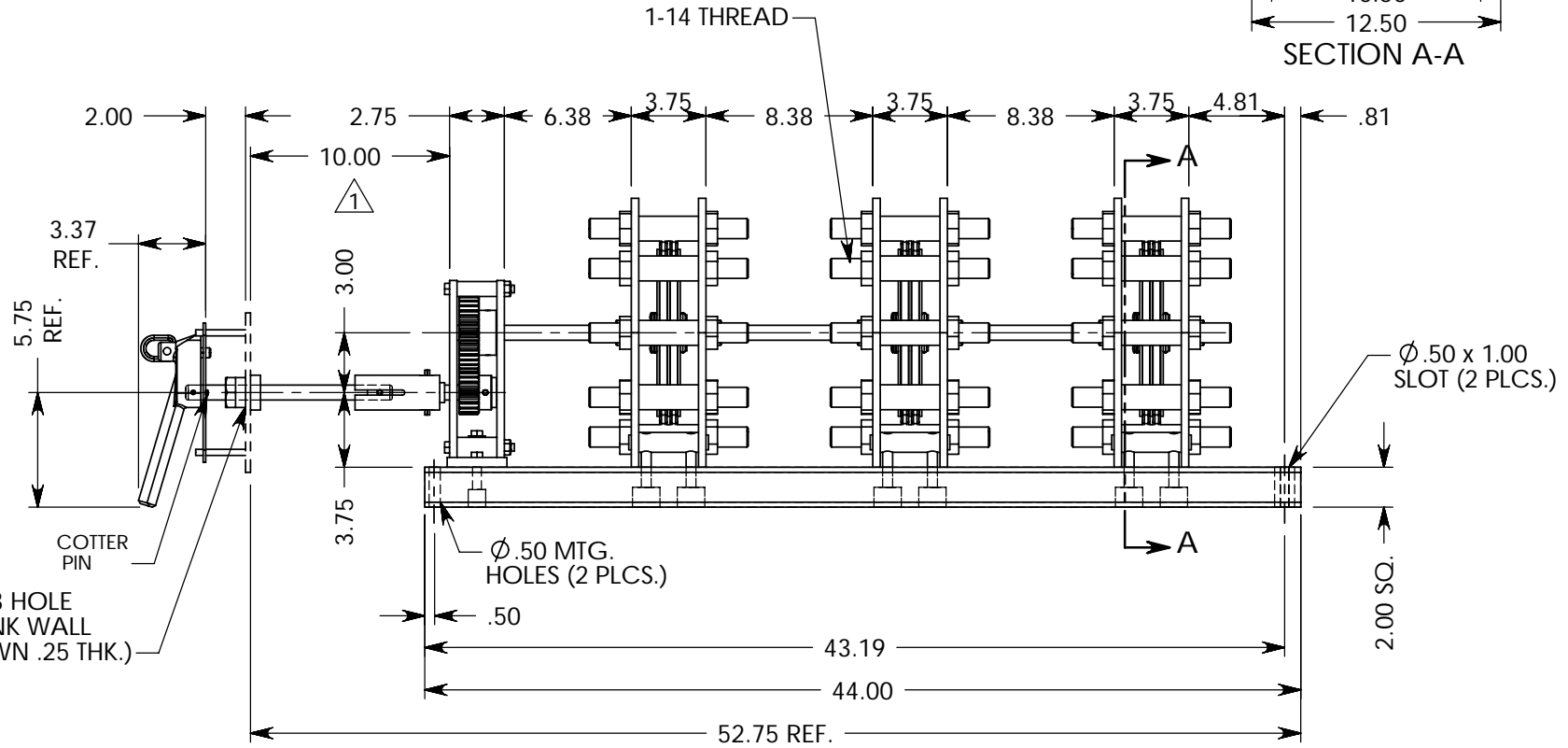
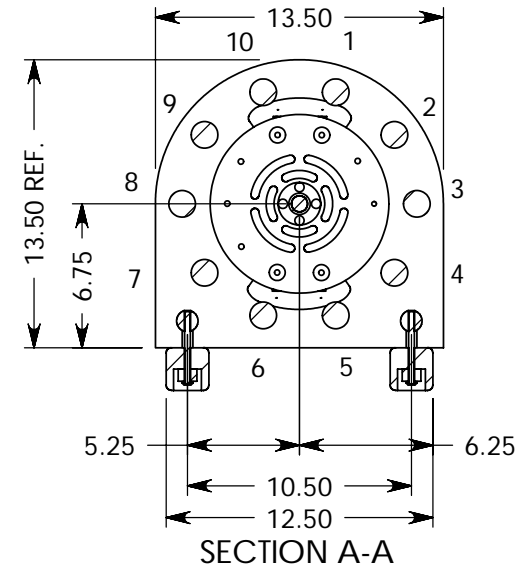
REVISION NOTE:
 DIM WAS 6.50.
 REVISED 2 POSITION INDEX PLATE
 TO A BLANK INDEX PLATE.



REPRESENTATIVE TEST VALUES IN OIL:
 205KV FW MAXIMUM WITHSTAND
 10° RISE OVER OIL AT 1000 AMPS.

NOTE:

- 1) ITEMS SHOWN IN PHANTOM LINES & INDEX PLATE NUTS ARE NOT SUPPLIED BY QUALITY SWITCH.
- 2) HANDLE ROTATES CLOCKWISE 72° SWITCH ROTATES COUNTER-CLOCKWISE 36°.
- 3) MOVING CONTACTS ARE SILVER PLATED.
- 4) FRONT SHAFT AND HANDLE DRILLED STANDARD, CUSTOMER TO ADVISE IF NOT DRILLED.



© COPYRIGHT 2000 THIS PRINT IS THE PROPERTY OF QUALITY SWITCH, INC. AND IS LOANED SUBJECT TO THE RETURN UPON DEMAND. ITS CONTENTS ARE CONFIDENTIAL AND MUST NOT BE COPIED OR SUBMITTED, IN ANY FORM, TO OUTSIDE PARTIES FOR USE OR EXAMINATION. ALL RIGHTS TO DESIGN OR INVENTION ARE RESERVED BY QUALITY SWITCH, INC.

QUALITY SWITCH, INC.
 NEWTON FALLS, OHIO

UNLESS OTHERWISE SPECIFIED
 DIMENSIONS ARE IN INCHES,
 TOLERANCE ± 0.005 , ANGLES $\pm 30'$
 WEIGHT: 98.11 LBS. DFTM: KMW

CAD GENERATED
 DRAWING, DO
 NOT MANUALLY
 CHANGE

MAT:

CHKD: D.L.S.
 CHKD:

SCALE 1:9
 SHEET 1 OF 3

**3 DECK 2 POS 1000 AMP
 150KV BIL DUAL VOLTAGE
 FOR USE IN OIL**

PLOT DATE: 5/2/2005

FILE: \\Qserver\QS\3\1kA\3L1001502DS3-WG

REF: DATE: 4/28/2005

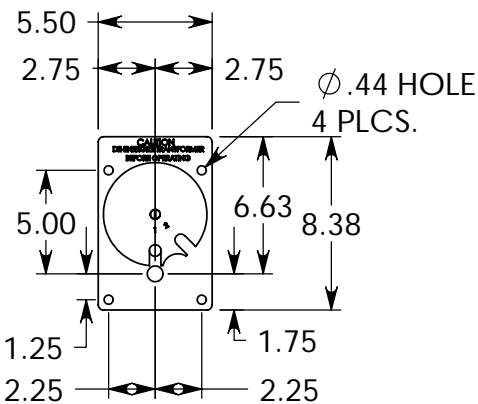
DWG. NO. 3L1001502DS3-WGT-00

REV 01 KMW 05/02/05 SEE REVISION NOTE

REV 01

REV 00

STATION	
O.C.	X
CNCM	
CNCL	
ENG	X
SALES	X
1	
2	
3	
4	X
5	
6a	
6b	
6c	
7	



VIEW OF INDEX PLATE

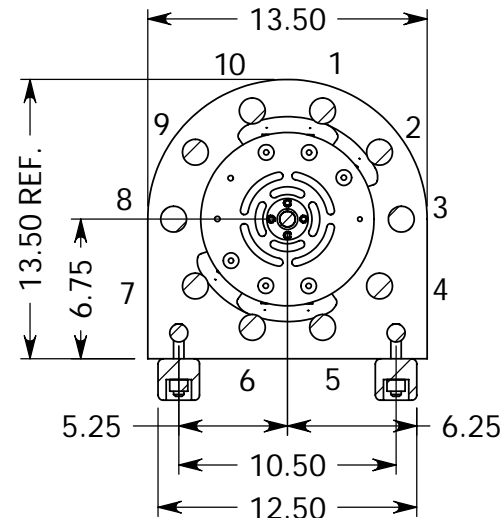
REPRESENTATIVE TEST VALUES IN OIL:
 205KV FW MAXIMUM WITHSTAND
 10° RISE OVER OIL AT 1000 AMPS.

NOTE:

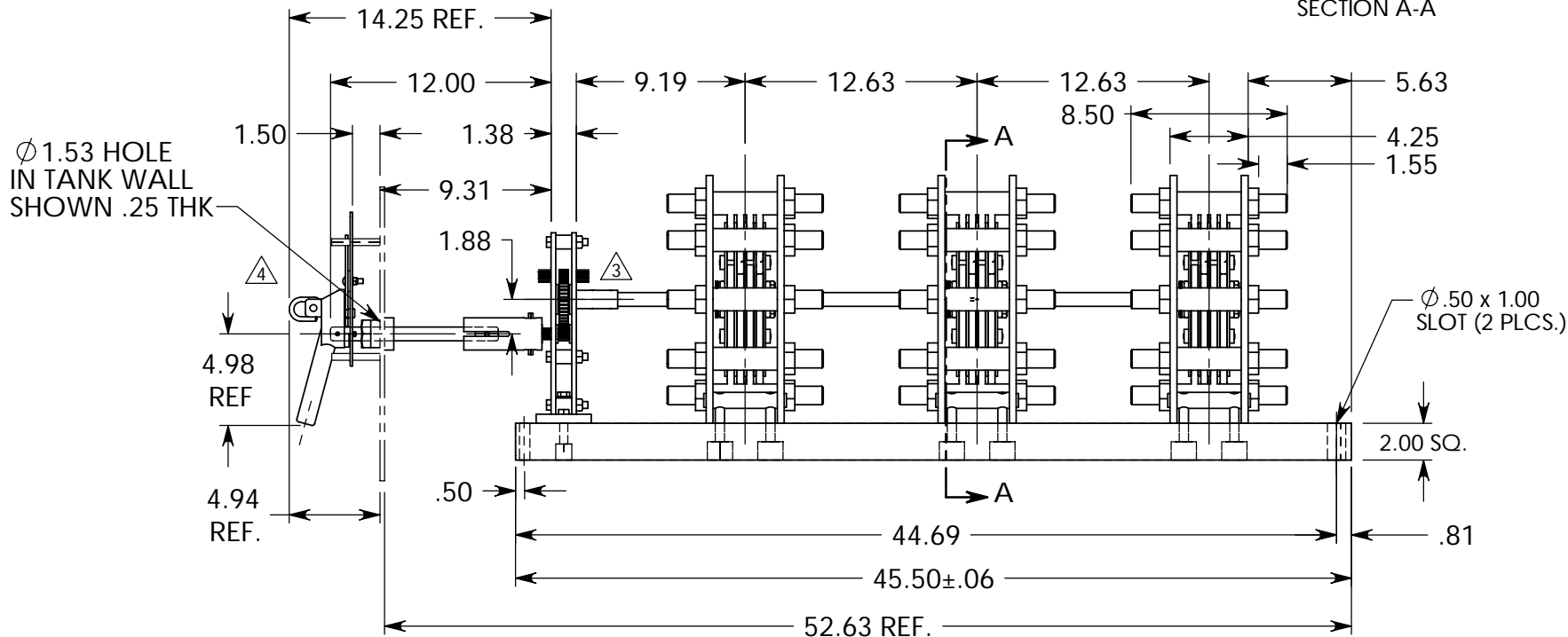
- 1) ITEMS SHOWN IN PHANTOM LINES & INDEX PLATE NUTS ARE NOT SUPPLIED BY QUALITY SWITCH.
- 2) HANDLE ROTATES COUNTER-CLOCKWISE 360° SWITCH ROTATES CLOCKWISE 72°.
- 3) MOVING CONTACTS ARE SILVER PLATED.
- 4) FRONT SHAFT AND HANDLE DRILLED STANDARD, CUSTOMER TO ADVISE IF NOT DRILLED.

POSITION CONNECTS STUDS

A/1	10-1-2 & 5-6-7
B/2	2-3-4 & 7-8-9



SECTION A-A



© COPYRIGHT 2000 THIS PRINT IS THE PROPERTY OF QUALITY SWITCH, INC. AND IS LOANED SUBJECT TO THE RETURN UPON DEMAND. ITS CONTENTS ARE CONFIDENTIAL AND MUST NOT BE COPIED OR SUBMITTED, IN ANY FORM, TO OUTSIDE PARTIES FOR USE OR EXAMINATION. ALL RIGHTS TO DESIGN OR INVENTION ARE RESERVED BY QUALITY SWITCH, INC.

QUALITY SWITCH, INC.
 NEWTON FALLS, OHIO

UNLESS OTHERWISE SPECIFIED
 DIMENSIONS ARE IN INCHES,
 TOLERANCE ±.005, ANGLES ±30°
 WEIGHT: 112.502 LBS DFTM: R.M.N.

CAD GENERATED
 DRAWING, DO
 NOT MANUALLY
 CHANGE

MAT:	
CHKD: D.L.S.	SCALE 1:9
CHKD:	SHEET 1 OF 3

**3 DECK 2 POS 1000 AMP
 150KV BIL DUAL VOLTAGE
 FOR USE IN OIL**

PLOT DATE: 1/21/2005	
FILE: F:\QS\3\1KA\3L1001502PS3-WG5-01	
REF:	DATE: 9/5/2003
DWG. NO.	
3L1001502PS3-WG5-01	

J.A.S. 11-02-04 STANDARD GENEVA HANDLE WAS NETWORK HANDLE
 R 04
 J.A.S. 02-19-04 MODIFIED DRIVE COUPLING & HARDWARE
 R 03

STATION	
Q.C.	X
CNCM	
CNCL	
ENG	X
SALES	X
CAT	X
1	
2	
3	
4	X
5	
6a	
6b	
6c	
6d	
7	

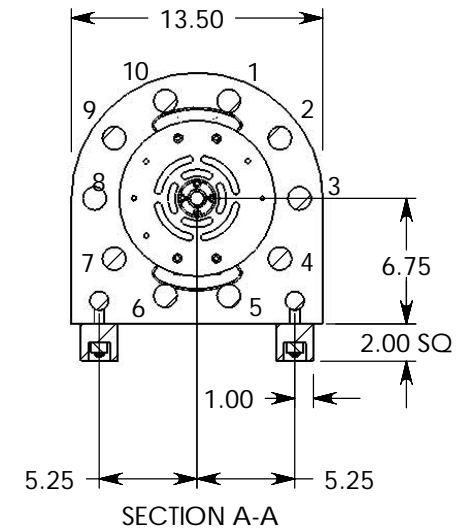
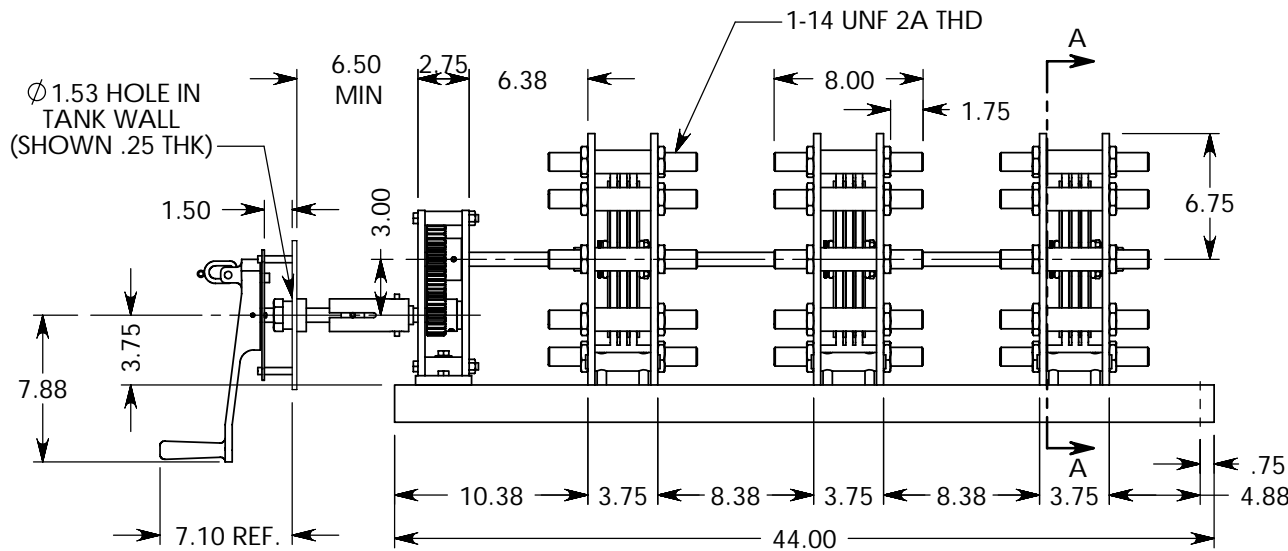
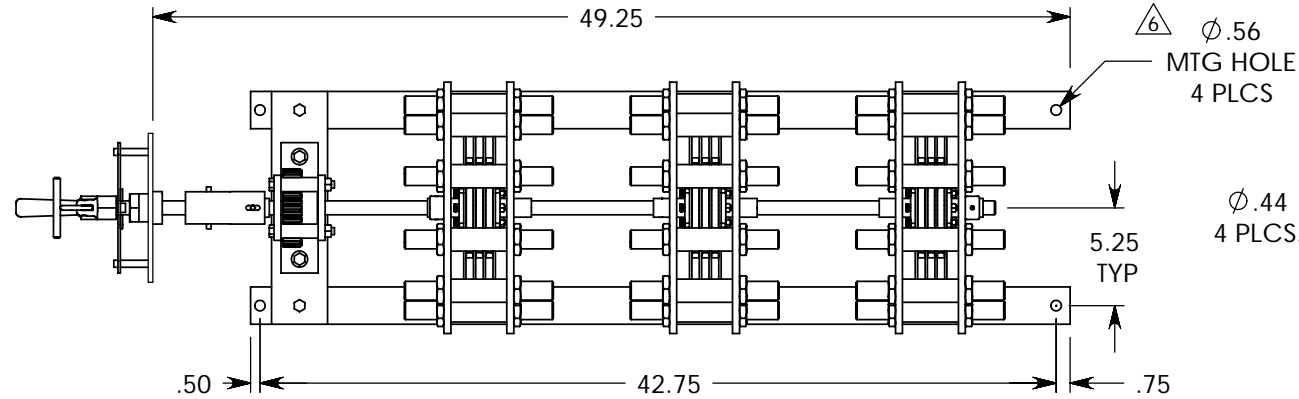
NOTES:

- 1) GEAR BOX REVERSES SWITCH
- HANDLE ROTATES C.W. 144°
- SWITCH ROTATES C.C.W. 72°
- 2) INDEX PLATE HOLES & MARKINGS SPECIFIED BY CUSTOMER.
- 3) MOVING CONTACTS ARE SILVER PLATED
- 4) ITEM(S) SHOWN IN PHANTOM LINES & INDEX PLATE NUTS SUPPLIED BY CUSTOMER.

REPRESENTATIVE TEST VALUES IN OIL:
205 KV FW MAXIMUM WITHSTAND INTERCONTACT.
14 °C RISE OVER OIL AT 1500 AMPS.

POSITION CONNECTS STUDS

1 OR A	1-10 & 5-6	⚠
2 OR B	8-9 & 3-4	



© COPYRIGHT 2000 THIS PRINT IS THE PROPERTY OF QUALITY SWITCH, INC. AND IS LOANED SUBJECT TO THE RETURN UPON DEMAND. ITS CONTENTS ARE CONFIDENTIAL AND MUST NOT BE COPIED OR SUBMITTED, IN ANY FORM, TO OUTSIDE PARTIES FOR USE OR EXAMINATION. ALL RIGHTS TO DESIGN OR INVENTION ARE RESERVED BY QUALITY SWITCH, INC.

QUALITY SWITCH, INC.
NEWTON FALLS, OHIO

UNLESS OTHERWISE SPECIFIED
DIMENSIONS ARE IN INCHES,
TOLERANCE ±.005, ANGLES ±30°
WEIGHT: 95.3 LBS. DFTM: P.L.E.

CAD GENERATED
DRAWING, DO
NOT MANUALLY
CHANGE

MAT:	
CHKD: J.A.S.	SCALE 1:10
CHKD:	SHEET 1 OF 3

**3 DECK 2 POS 1500 AMP
150 KV BIL DUAL VOLTAGE
FOR USE IN OIL**

PLOT DATE: 10/9/2007	
FILE: G:\QS\3\1.5kA\150KV\3L15015 2DS3-WLT-0	
REF:	DATE: 7/8/2003
DWG. NO. 3L1501502DS3-WLT-00	

D.L.S. 10-09-07 REAR MTG SLOTS CHANGED TO Ø.56 HOLES

R 06

CORRECTED STUD CONNECTION TABLE: R.M.N. 1/22/04

R 05

STATION	
O.C.	X
CNCM	
CNCL	
ENG	X
SALES	X
CAT	X
1	
2	
3	
4	X
5	
6a	
6b	
6c	
6d	
6e	
6f	
6g	
7	

REVISION NOTE (01):
 REVISED NOTE 1
 REVISED INDEX PLATE
 REVISED CONNECTIONS CHART
 REMOVED ϕ .56 SLOT



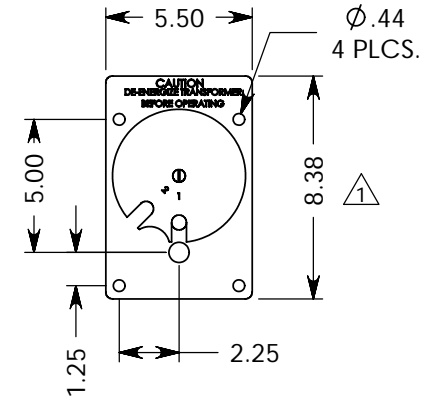
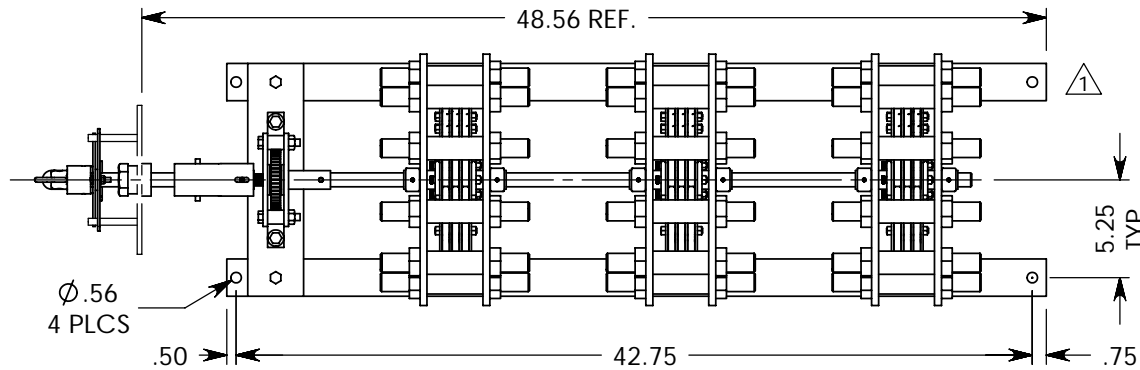
NOTES:

- 1) GEAR BOX REVERSES SWITCH
 - HANDLE ROTATES CLOCKWISE 360°
 - SWITCH ROTATES COUNTER-CLOCKWISE 72°
- 2) CUSTOMER TO SPECIFY LETTERS OR NUMBERS ON INDEX PLATE.
- 3) MOVING CONTACTS ARE SILVER PLATED
- 4) ITEM(S) SHOWN IN PHANTOM LINES & INDEX PLATE NUTS SUPPLIED BY CUSTOMER.
- 5) FRONT SHAFT AND HANDLE DRILLED STANDARD, CUSTOMER TO ADVISE IF NOT DRILLED.

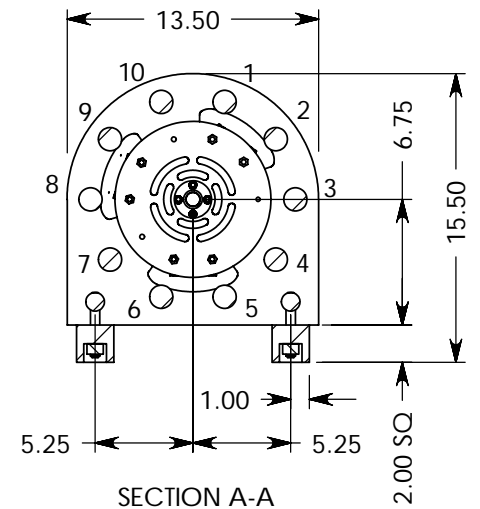
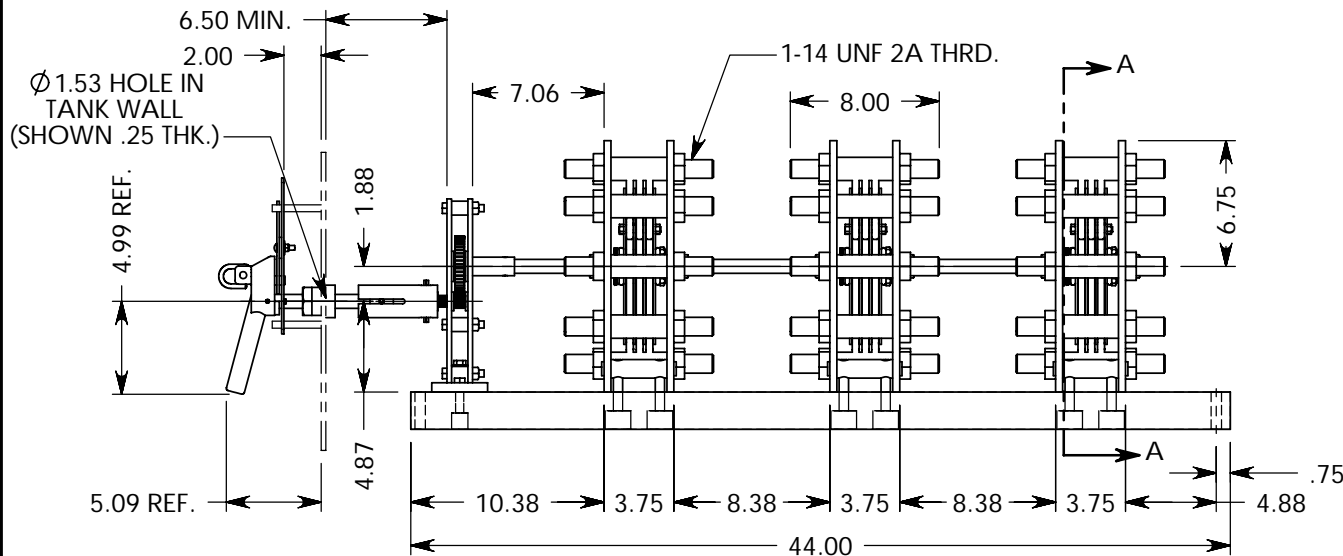
REPRESENTATIVE TEST VALUES IN OIL:
 205 KV FW MAXIMUM WITHSTAND INTERCONTACT.
 14°C RISE OVER OIL AT 1500 AMPS.



POSITION	CONNECTS STUDS
1 OR A	1-2 & 5-6 & 8-9
2 OR B	3-4 & 6-7 & 9-10



VIEW OF INDEX PLATE



SECTION A-A

© COPYRIGHT 2000 THIS PRINT IS THE PROPERTY OF QUALITY SWITCH, INC. AND IS LOANED SUBJECT TO THE RETURN UPON DEMAND. ITS CONTENTS ARE CONFIDENTIAL AND MUST NOT BE COPIED OR SUBMITTED, IN ANY FORM, TO OUTSIDE PARTIES FOR USE OR EXAMINATION. ALL RIGHTS TO DESIGN OR INVENTION ARE RESERVED BY QUALITY SWITCH, INC.

QUALITY SWITCH, INC.
 NEWTON FALLS, OHIO

UNLESS OTHERWISE SPECIFIED
 DIMENSIONS ARE IN INCHES,
 TOLERANCE \pm .005, ANGLES \pm 30°
 WEIGHT: 112.5 LBS., DFTM: R.M.N.

CAD GENERATED
 DRAWING, DO
 NOT MANUALLY
 CHANGE

MAT:	SCALE
CHKD: D.L.S.	1:10
CHKD:	SHEET OF
	1 3

**3 DECK 2 POS 1500 AMP
 150 KV BIL DUAL VOLTAGE
 FOR USE IN OIL**

PLOT DATE: 7/15/2005	
FILE: \\Qserver\qs\3\1.5kA\150kVB\3-1501502TS3	
REF:	DATE: 1/22/2004
DWG. NO. 3L1501502TS3-WLT-00	

R 01 KMW 07/15/05 SEE REVISION NOTE (01)